



The St Paul's Post



January 2024



www.stpaulscofeprimaryschool.co.uk



stpaulsprimaryschool@wolverhampton.gov.uk



01902 558621



St Paul's CofE Primary School – Pendeford



@StPauls_CofE

Welcome back to school – Spring term 2024!



Happy New Year to all our children and their families. I hope you all shared some special times with loved ones over the Christmas break.

We are looking forward to welcoming the children back to school, raring to go for the excitement of the term ahead! Curriculum newsletters will be uploaded to our [Class Pages](#) on the website and shared via text at the end of this week, providing useful information about your child's class and their learning for this half term.

Here's to a happy, healthy and successful 2024 for all who are part of the St Paul's community.

Best wishes

Mrs J Ferretti
Headteacher.

As always, if you have any questions, concerns or queries, please speak to your child's class teacher in the first instance, with myself or Mr Davis-Powell on the gate, or contact the school office.



Toddler and Baby Group

Our stay and play sessions – Little Lights – will begin again on Monday 15th January at 9am. Tea/coffee/squash and biscuits provided. Donations are welcome but not expected. Monies raised will be used to fund refreshments and future resources. Please spread the word – **everyone** is welcome!

Come and join us at

St Paul's



'Little

Lights'

Stay & Play

Adverse Weather

If we experience any severe snowfall in the coming term, we will endeavour to operate normally wherever possible. Any closures will be in exceptional circumstances and be made in the interests of health and safety. A school closure could be directed by the Local Authority which would mean that all maintained schools in the city must close. Alternatively, a local school closure may be necessary due to conditions specifically around our school.

Should a decision to close be made across all schools, information will be shared on the "Wolverhampton Today" Facebook page, the City of Wolverhampton Council's Twitter feed and on the City of Wolverhampton Council's Website.

If there is no definite announcement about Wolverhampton schools by 7:30am, it can be assumed that there has not been a general closure.

As a school, we will send a text message to all parents as soon as a decision to close is taken (either by the LA or by school.). We will also post the closure on our Facebook page.

Where possible, we will give as much notice as possible. I am sure however, you can appreciate that forecasts can be uncertain and there are times when the weather can take us somewhat by surprise!



Class Led Worships

We were delighted to invite parents in to share in our class led worships last term – Each class did a brilliant job!

This half term we look forward to worships from **Year 3** – Wednesday 31st January, **Year 4** – Thursday 1st February and **Year 1** – Thursday 8th February – all at **9am**. Parents are welcome to attend.

Young Voices

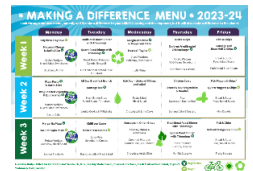
Our Year 5 and 6 children are looking forward to representing St Paul's at the Young Voices concert on 11th January. Singing as part of a 6000 person choir at the Resorts World Arena is certainly an unforgettable experience for them! A letter regarding arrangements for the concert has gone out via text and can be found on the [Letters](#) page of the school website.

www.stpaulscofeprimaryschool.co.uk/letters



School Dinners

Our school dinner menu can be viewed by clicking on the menu; A reminder that following children's feedback, the following menu change was made;



Thursday Week 2 - Chicken Curry and Sweet & Sour Noodles was replaced with **Roast Dinner**.

Also, this half term, **Sub of the Day** will be replaced with **Jacket of the Day** with a range of fillings.



A polite reminder, not to send items obviously containing nuts into school due to children with severe allergies (this includes Nutella & peanut butter).

Parent workshops and meetings



* We are in the process of planning some workshops for parents focusing on SATs, RWI and the Phonic Screen, the Y4 Multiplication Tables Check, Reading, Maths and Online safety. Keep an eye out for more details to follow soon.



Enrichment Clubs... will begin again from **Monday 15th January** and will run until **w/c Monday 5th February**. (4 weeks)

A letter detailing this half term's club offer will also be sent out during the week.

Day	Club	Year groups	Cost/session	Time/collect
Monday	Football (School led-Mrs Wadelin)	Y3 & 4 Boys *	£2.50	3.15-4.00 (earlier finish due to dark evenings) Gate
	Lego (School led - Mrs Cook)	Y3-6	£1.50	3.15-4.00 Gate
	Crochet (School led - Mrs Boden)	Y4-6	£1.50	3.15-4.00 Front office
Tuesday	Football (School led - Mrs Clarke)	Y3 - 6 Girls *	£2.50	3.15-4.00 (earlier finish due to dark evenings) Gate
Every Day	Miss Woods' Pupil Choice	Y3-6	--	Lunchtimes
	Mrs Wadelin's Sports			
	Mrs Boden - M/T/W/F		--	
	Pupil Choice		--	
	Mrs Allcott's Playground club Mon/Tues/Weds	Y1 & 2	--	

A reminder that places are limited and allocated on a first come, first serve basis for the half term.

Each half term, club places will be reset and allocated again. **Clubs must be booked under 'Clubs' and then paid for via 'Payments' in the Gateway app to secure the place.**

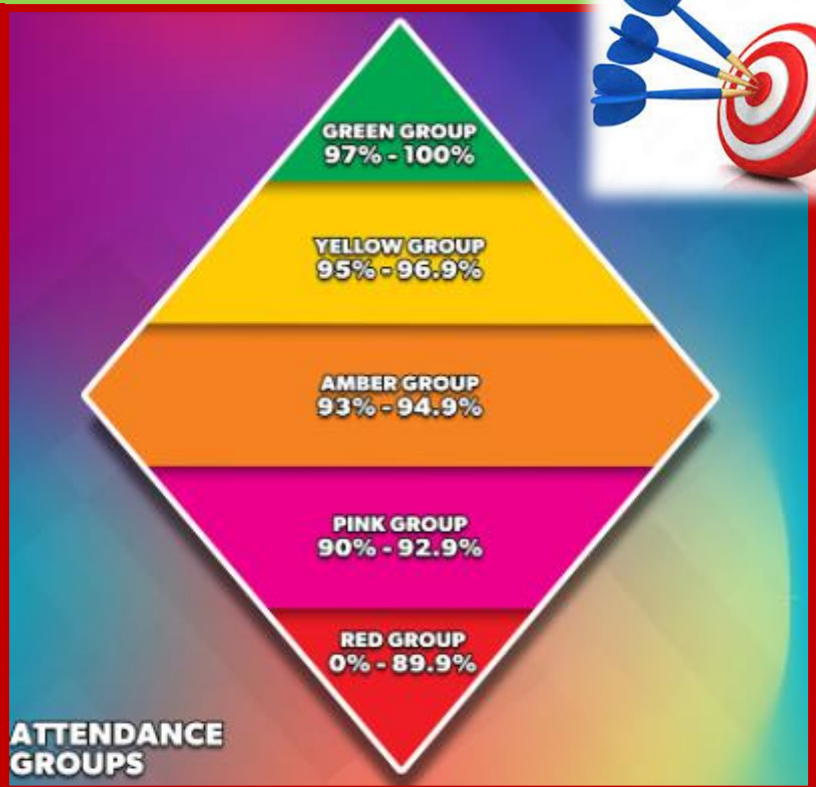
A text message will be sent to inform parents when the clubs go live on the Gateway app.

Lunchtime clubs do not need to be booked.

Funds raised through school-led clubs will be used to fund club resources / other clubs in the future.



Autumn Attendance	
Nur	86.1%
Rec	93.1%
Yr1	97.1%
Yr2	92.7%
Yr3	94.4%
Yr4	93.8%
Yr5	95.8%
Yr6	94.7%
Whole School	94.2%



GREEN	Best chance of academic success
YELLOW	Risk of underachievement
AMBER	Serious risk of underachievement
PINK	Severe risk of underachievement
RED	Extreme risk – persistent absentee

School attendance is vital for a child's future success.

This year we intend to improve our whole school attendance and appreciate parents' support in ensuring children are always at school when they are able to be.

The parent of every child whose attendance is at least 96% at the end of the half term will be entered into a prize draw to win a £25 shopping voucher.

We will also be introducing rewards and incentives for the children in school too.

Please read our information - [Why does attendance matter?](#)

And our school [Attendance Policy](#).

Autumn 2 – 135 children with 96%+ attendance entered into our prize draw!

Autumn 2 – 48 children with 100% attendance!
Well done!

Diary Dates

January 2024



Monday 8 th	Back to school – Happy New Year!
Wednesday 10 th	Y6 Buddhist Temple visit – to be rearranged
Thursday 11 th	Young Voices
Monday 15 th	Y4 Synagogue visit – to be rearranged
Tuesday 16 th	Y2 Hindu temple visit - to be rearranged
Wednesday 17 th	Y4 Romans / Y6 WW2 workshops
Wednesday 17 th	Y6 Height & weight check / healthy lifestyle talk
Monday 22 nd	Full Governing Body – 5.30pm
Sunday 28 th	Celebration of the Feast of St Paul
Monday 29 th	Y4 Kingswood parents meeting
Wednesday 31 st	Y3 Class led worship – St Paul

February

Thursday 1 st	Y4 Class led worship
Tuesday 6 th	Safer Internet Day
Tuesday 6 th	Y6 SATs meeting for parents
Thursday 7 th	SEND Coffee Morning
Thursday 8 th	Y1 Class led worship – Love
Mon 12th Feb – Fri 16th Feb - Half Term	
Monday 19 th	Back to school
Tuesday 20 th	Ash Wednesday worship
Tuesday 20 th	Y1 Warwick Castle visit
Tuesday 20 th	Parents Evening – Mid year reports
Wednesday 21 st	Y6 Cosford visit
Wednesday 21 st	Parents Evening – Mid year reports
Thursday 22 nd	Y4 Lunt Fort visit
Tuesday 27 th	Y2 KS1 SATs meeting
Wednesday 28 th	Y2 Class led worship – Fairtrade

Our St Paul's Promise;

- P** We are **p**repared, we are **p**olite, we are **p**roud.
- R** We are **r**espectful, we are **r**esponsible, we are **r**esilient
- O** We make the most of every **o**pportunity
- M** We **m**ake a difference.
- I** We are **i**n control
- S** We are **s**afe
- E** We **e**njoy and **e**xcel.



At St Paul's, we are: **safe, prepared and respectful.**



The LORD bless thee, and keep thee:
The LORD make his face shine upon thee,
and be gracious unto thee:
The LORD lift up his countenance upon thee,
and give thee peace.

Numbers 6:24-26

Rainbow Christian Values;

Harmony, Patience, Honesty, Forgiveness, Thankfulness, Justice, Humility

Our Mission Statement;

Building each other up—with God as our firm foundation.

(The Bible: I Thessalonians 5:11)



Term Dates 2023-24

Autumn Term 2023

Term starts: Wednesday 6th September
Half Term: Monday 30th - Friday 3rd November
Term ends: Thursday 21st December
Christmas Holidays: Friday 22nd December 2023 -
Friday 5th January 2024

Spring Term 2024

Term starts: Monday 8th January 2024
Half Term: Monday 12th - Friday 16th February
Term ends: Friday 22nd March
Easter Holidays: Monday 25th March —Friday 5th April

Summer Term 2024

Term starts: Monday 8th April
Half Term: Monday 27th May - Friday 31st May
Term ends: Thursday 18th July
Summer Holidays: Friday 19th July —Monday 2nd September

Training Days—school closed to pupils:

Monday 4th September, Tuesday 5th September

Friday 22nd December

Friday 19th July

Monday 22nd July

Autumn Term 2024

Term starts: Tuesday 3rd September 2024

[Term dates for 2024-2025](#) can be found on our website or by clicking the link. Please note – INSET days are not yet confirmed.

St Paul's C of E Primary School



Keeping You Safe



SAFEGUARDING IS EVERYONE'S RESPONSIBILITY

- Do you have concerns?
- Has someone made a disclosure?
- Who can you talk to?



At St Paul's the safety of our children is of utmost importance. It is everyone's responsibility to safeguard our children but speak to one of the people below if you are worried.

<p>Mrs J Ferretti</p> <p>Headteacher</p> <p>Designated Safeguarding Lead</p>		<p>Mr L Davis-Powell</p> <p>Deputy Headteacher</p> <p>Deputy Designated Safeguarding Lead</p>	
<p>Mrs S Lalli</p> <p>Deputy Designated Safeguarding Lead</p>		<p>Mrs J Ferretti</p> <p>Headteacher</p> <p>Online Safety Leader</p>	
<p>Mrs L Clarke</p> <p>Safeguarding Governor</p>		<p>Protect and safeguard the welfare of all our children.</p> <p>Working together to help safeguard our children</p>	

If you have a concern about the safety of a child contact **Wolverhampton Multi Agency Safeguarding Hub** by clicking [here](#) or by phone; **01902 555392**

Opening times: Monday to Thursday 8:30am to 5pm, Friday 8:30am to 4:30pm

Outside of the above hours for emergencies on **01902 552999**

If the child or young person is at **immediate risk** of **serious harm** dial **999**

If you suspect or believe a child is suffering or is likely to suffer Significant Harm, including any form of mistreatment or abuse, **you must report your concerns**. All referrals must be confirmed within one hour by completing the on-line multi agency referral form ([MARF](#)).