



Health & Safety Policy & Procedures

2023 - 2024

Statement of Local Health and Safety Intent

St Paul's Church of England Primary School

Good health and safety management will be an integral part of the operation of the school, the governing body, Head Teacher, employees, partners and all other people with whom we do business. We will meet all the requirements set out in the corporate health and safety policy.

St Paul's C of E Primary school will ensure compliance with legal standards/approved codes of practice, along with, where relevant, health and safety guidance provided by the City of Wolverhampton Council (CWC). Wherever possible, and where statutory standards and requirements are not in place, the school will meet best practice standards.

It is furthermore the policy of the school to ensure that:

- ❖ Ensure relevant safety actions are included during the staff appraisal process.
- ❖ Develop and maintain local arrangements and procedures that interpret health & safety legislation and guidance that apply to this school.
- ❖ Review with the Governing Body all progress against our plans and take appropriate action.
- ❖ Provide an environment in which school staff can carry out their tasks without fear of intimidation, harassment, violence or the negative aspects of stress.
- ❖ Assess and control risks to all school staff.
- ❖ Monitor accident trends throughout the school to further inform the health and safety aspects of the school improvement plan.
- ❖ Monitor our performance against plans.
- ❖ Copy this statement to all staff members.

Head Teacher:

Chair of Governors:

Date:

Date:

St Paul's C of E Primary School Health and Safety Policy

Introduction

Underpinning all school policies is the school's vision which is inclusive and distinctly Christian.

We are building the Kingdom of God as we radiate Christian values of honesty, forgiveness, patience, humility, justice, thankfulness and harmony in our lives, our school and our community.

Be who you were made to be and live in harmony with different people - trust, wait and keep persevering – be true to yourself, others and God - learn from mistakes and there's always a fresh start - rejoice and be thankful in all situations – be fair – be like a servant to others

Building each other up – with God as our firm foundation' (The Bible: I Thessalonians 5:11)

Good health and safety management will be an integral part of the operation of the school, the Governing Body, Head Teacher, employees, partners and all other people with whom we do business.

Our school will ensure compliance with minimum legal standards/approved codes of practice, along with health and safety guidance provided by Wolverhampton Council where relevant. Wherever possible and where statutory standards and requirements are not in place the school will meet best practice standards.

This document details the organisation and arrangements required to maintain and continuously improve our school's health and safety management system.

The contents include a list of our local procedures for this school and the document control system we use.

The Aim of The Policy is to:

- Ensure that all reasonably practicable steps are taken to ensure the health, safety, and welfare of all persons using the premises.
- Ensure that all reasonably practicable steps are taken to ensure the health and safety of staff, pupils, and other supervising adults participating in off-site visits.
- Establish and maintain safe working procedures amongst staff and pupils.
- Make arrangements for ensuring safety and absence of risks to health in connection with the use, handling, storage, and transport of articles and substances.
- Develop safety awareness amongst staff, pupils, and other supervising adults.
- Formulate and implement effective procedures for use in the event of fire and other emergencies.

The responsibilities and duties for the management of health and safety within the scope of this policy are allocated as follows:

Governors

- The safety of plant equipment, buildings, and safe systems of work.
- Safe arrangements for the use, handling, storage, and transport of articles and substances.
- Appropriate information, instruction, training, and supervision to assist all staff, pupils, and visitors to avoid hazards and to contribute positively to their own health and safety whilst on school premises.
- A safe workplace and safe access and egress.
- A healthy working environment.
- Procedures for fire evacuation, first aid cover and other emergency situations.

- A school safety policy is produced, and the policy is regularly reviewed the Governors Monitoring Committee, ensuring that the requirements of health and safety legislation are met, that corporate health and safety standards are met, where relevant, and to promote best practice.
- The safety policies will be brought to the notice of all employees.
- The school's staffing structure appropriately reflects the responsibilities for carrying out the arrangements for health and safety.
- Health and safety issues concerning the school are identified and appropriate action taken.
- Ensuring effective communication with the Head Teacher, Wolverhampton Council, staff, parents and pupils in respect of health and safety matters.
- Ensuring that the Governing Body and Head Teacher recognise and set out the roles of specialists (e.g., Health and Safety Officers, Education Advisors, Fire Officers, etc.) and the means of effectively liaising with them.
- Regular safety reports are provided by the Head Teacher so that safety arrangements can be monitored and evaluated.
- Appropriate facilities for accredited Union Safety Representatives are provided to enable them to fulfil their duties.
- All reasonable facilities and information are provided to Inspectors of the Health and Safety Executive and any other health and safety official.

In practice, this Governing Body will delegate the functions necessary to discharge these responsibilities to the Head Teacher and Leadership and Management Team of our school; however, they will ensure that they have adequate monitoring of these functions in place.

Head Teacher:

Wolverhampton Corporate Health and Safety and School Governors have placed responsibility on the Head Teacher to achieve the objectives of the health and safety policy.

The Head Teacher will ensure that:

- Policies and procedures with regard to health, safety, and welfare matters within the school are established in writing, and approved by the Governing Body, and that the policies and procedures are known, understood, and followed by all members of staff, including temporary/supply staff.
- Any health and safety matters raised, and guidance from Wolverhampton Corporate Health and Safety, are brought to the attention of the Governing Body.
- Regular reviews of the safe performance of all departments of the school are undertaken with appropriate action when necessary and are reported to the Governing Body.
- Accidents, incidents, and dangerous occurrences are reported, investigated, and, where appropriate, preventive measures are taken. Adequate first aid provision is made for staff and pupils and other persons, whilst on school premises and when working away from the school, in accordance with relevant guidance.
- Training needs are identified, and arrangements are made for those needs to be met.
- Necessary arrangements are made to ensure that Union Safety Representatives can effectively carry out their functions, and that consideration is given to reports on inspections carried out by Safety Representatives.
- All parts of the premises, plant and equipment for which the Governors have responsibility for purchase and/or repair, are regularly inspected and maintained in safe working order.
- Goods purchased comply with necessary safety standards and that all purchased equipment is safely installed.
- Any unsafe items which are reported to the Site Manager and any item which constitutes a health and safety hazard are taken out of use.

- Staff and volunteer helpers organising and taking part in visits, journeys and holiday excursions have the necessary knowledge, experience and skills so that they will be aware of, and have made arrangements to deal with, any risks involved.
- Working arrangements are agreed with contractors working on the premises and are closely monitored to ensure that the working practices do not endanger the health and/or safety of employees, pupils or other persons working on the premises.
- Awareness and co-operation amongst staff with regard to health and safety matters is actively encouraged.

The Management Team

The management team will undertake general responsibility to ensure that all necessary health and safety activities, requirements and standards are undertaken and met within their respective areas of control.

This will be done under the direction of the headteacher. Managers, deputy headteachers, assistant headteachers and any other members of staff with supervisory responsibility will:

- Ensure that risk assessments are in place for all activities undertaken in areas under their control and that professional knowledge and input are provided, as required
- Ensure that health and safety is considered in routine meetings with staff
- Identify any employee health and safety training needs and ensure that these are communicated to the headteacher
- Ensure that any new staff receive specific health and safety induction training and record that this has been done
- Take immediate appropriate action in respect of any work situation (including contractors) within their control, which they consider posing a serious and immediate risk to health and safety
- Ensure that all injuries, occupational illness, fires, incidents of aggression at work and near misses are immediately reported to the headteacher
- Ensure that the headteacher is made aware of any breach of statutory regulations or unsafe practices which cannot be dealt with effectively by them
- Ensure that all defective equipment or plant is taken out of use or disabled or made safe until repaired or replaced
- Ensure that protective clothing or equipment is issued and used where necessary
- Ensure that all areas of work are maintained to a high standard of housekeeping
- Respond immediately to all hazards brought to their attention by employees
- Undertake appropriate health and safety courses.

Class Teachers Staff timetabled to be in charge of classes have the following responsibility to assist the Headteacher:

- a) To follow safe working procedures personally.
- b) To ensure the safety of Pupils in classrooms and other areas of the school whilst in their charge and ensure Pupils are provided with health & safety information during lessons as required.
- c) To assist in developing risk assessments and ensuring their classrooms fit for purpose.
- d) To be aware of and to adopt safety measures within their teaching areas.
- e) To request special safe working procedures, protective clothing, guards, etc., where necessary and ensure they are used.
- f) To make recommendations to the headteacher regarding the safety of equipment or tools, in particular any equipment or machinery which is potentially dangerous.
- g) To be aware of emergency procedures in respect of fire, bomb alert, first aid, accident etc. and to carry them out.

Site Manager

- Ensuring security of the school site and that the site is clean and tidy.

- Ensuring that the school fire alarm and equipment are properly maintained and checked regularly.
- Monitoring of work by contractors on site
- That hazardous substances are suitably stored; the COSHH assessments have been carried out, up to date, and the assessment sheets available to staff who need them.
- All staff using chemicals have been informed of the dangers from the chemicals they use and the control measures that are in place to prevent them or others from being harmed.
- Staff using chemicals are informed of the first aid treatment required in the event of them coming into contact with the chemicals.
- Risk assessments have been carried out on all hazardous activities undertaken by the department i.e. using ladders, entering boiler rooms etc. Assist in the development of other school risk assessments.
- Undertake all relevant checks relating to the swimming pool in accordance with training undertaken.
- The fire logbook is up to date and all fire alarm related checks and inspections are undertaken and can also be reported electronically via Stat Shelf.
- Use and maintain in a good condition all personal protective equipment issued by the school.

Educational Visits Coordinator (EVC)

Follow guidance provided where full responsibilities are outlined:

- Liaising with the employer, through the Education Health and Safety Manager.
- Ensuring a suitable and sufficient risk assessment is carried out for all educational visits carried out by the school.
- Attend Training courses and ensure Visit Leaders are competent and approved to support the planning and running of visits.
- Undertaking the functions outlined in the DfE publication “Health and Safety of Pupils on Educational Visits” and National Guidance for Educational Visits.
- The school uses Evolve recording systems.

Class Teachers

Staff timetabled to be in charge of classes have the following responsibility to assist the Head Teacher:

- To follow safe working procedures personally.
- To ensure the safety of pupils in classrooms and other areas of the school whilst in their charge.
- To be aware of and to adopt safety measures within their teaching areas.
- To request special safe working procedures, protective clothing, guards, etc. where necessary and ensures they are used.
- To make recommendations to the Head Teacher regarding the safety of equipment or tools, in particular any equipment or machinery, which is potentially dangerous?
- To be aware of emergency procedures in respect of fire, first aid, accident etc. and to carry them out.

Employees General Responsibilities

All employees have a general duty under the Health and Safety at Work Act 1974 to:

- Take reasonable care of their personal safety and that of other persons.
- Co-operate with the employer on health and safety matters to enable the employer to carry out their own responsibilities successfully.
- To use correctly any equipment provided for his/her safety.
- Report any defective equipment to his/her supervisor or other appropriate person, i.e., safety representative.
- Report accidents or dangerous occurrences at the earliest possible opportunity.
- Be familiar with and observe at all times all safety policies and procedures.

- Take reasonable precautions to ensure the safety of all persons in their charge.

Employees at St Paul's Church of England Primary School must:

- Report any hazard or malfunction to their supervisor. Employees must use all normal lines of internal communication before contacting external enforcement agencies.
- Follow all written and verbal instructions they are given to ensure personal safety and the safety of others, particularly pupils and service users who may not have sufficient maturity or understanding to have due regard for their own health and safety.
- Use their professional and specialist training to undertake dynamic risk assessments in difficult or emergency situations.
- Be sensibly and safely dressed for their particular working environment and conduct themselves at all times in an orderly manner in the workplace and refrain from any form of horseplay.
- Avoid any improvisations or shortcuts that could create unnecessary risks to health and safety.
- Maintain tools and equipment in good condition, reporting all defects to a supervisor.
- Report to a supervisor all accidents, incidents of aggression, work-related ill-health and near misses.
- Attend appropriate health and safety training courses and have knowledge of all relevant processes, materials and substances they use
- Understand all fire evacuation procedures and the location, position and function of fire safety equipment. Understand the risk assessments in their areas and comply with the control measures arising from them.

Arrangements for Health and Safety

(See local arrangements section)

Document Control

We will develop and maintain local documentation. Changes including re-issues and deletions to local school documentation will be authorised by the Head Teacher.

Co-operation

Local systems and documentation will be implemented following consultation through our school's health and safety governance meetings.

Communication

Local systems and documentation will be held electronically and in a hard copy format which will be made accessible to staff members.

Communication channels have been established for the exchange of health and safety knowledge and information. Where necessary, these communications will be recorded, to include:

- Line management meetings and staff meetings at site.
- Provision of information relating to safe systems of work and risk assessments.
- Communication of advice from schools Advisors and Educational Officers.
- Communication of health and safety bulletins or information from Wolverhampton Corporate Health and Safety.
- Communication of Wolverhampton Corporate Health and Safety and City Council advice, guidance and policies.
- Communications with relevant specialist advisors.

Where health and safety issues cannot be resolved at local level, they will be escalated through the management structure as appropriate.

Financial Resources

The Governors will review the school budget to determine, in the light of past performance, if adequate resources are being deployed to ensure adequate health and safety and will take appropriate action.

Competence

The school has competent persons in place to provide health and safety guidance to cover the areas of induction, identification of health and safety training needs and the provision and delivery of health and safety training.

School staff will continually develop their own competence through CPD activities including health and safety training on induction, refresher training and specific training where necessary, e.g. risk assessment techniques.

Planning & Prioritising (Setting Standards)

School Health & Safety Plans

School health and safety planning will be part of our school improvement planning process.

Planning will be carried out at regular intervals and will involve objective setting, identification of expected outcomes and allocation of resources.

Risk Assessments

Job and specific risk assessments will be carried out by staff within the school in accordance with the relevant local arrangements, e.g. manual handling, fire, hazardous substances, display screen equipment etc.

Local Arrangements

We will develop and maintain a range of local arrangements to achieve specific actions required for health and safety in the school (see local arrangements section).

Measuring H&S Performance

Active Monitoring

Our school management team will oversee active monitoring to include workplace inspections in accordance with our local arrangement for this.

The school will receive monitoring inspections from the following:

- OFSTED
- Health & Safety (Wolverhampton Corporate Health and Safety)
- Elite Safety in Education

Actions arising from third party audit/inspection will be incorporated within the school action plan with appropriate target dates for completion.

Reactive Monitoring

The school management team will oversee reactive monitoring to include accidents, near misses, and hazard reports in accordance with our local arrangements and report relevant findings to our Governing Body.

Reviewing Health & Safety Performance

Performance indicators used for the review of health and safety performance will include identification of areas where risk controls are inadequate or absent, the extent of achievement of specific health and safety objectives and an analysis of accident and ill-health data.

The school health and safety performance will be reviewed by the school management team quarterly and reported to school Governors.

Auditing/Inspecting Health & Safety Performance

Once the health and safety systems have been set up and introduced into the school it is a requirement that it is regularly checked to ensure that it remains up to date and effective. Health and safety auditing/inspecting will be carried out on a regular basis by the Governors and senior management (with assistance from Elite Safety in Education).

The purpose is to ensure the system remains effective. During the audit, the management procedures shown in the safety policy are checked to ensure that they are still put into practice and that the staff, are aware of them.

Local Arrangements

- Appendix 1 - [Accident Reporting Procedures](#)
- Appendix 2 - [Administration of Medication](#)
- Appendix 3 - [Asbestos](#)
- Appendix 4 - [Auditing the Safety System](#)
- Appendix 5 - [Communication](#)
- Appendix 6 - [Contractors](#)
- Appendix 7 - [Control of Substances Hazardous to Health](#)
- Appendix 8 - [Curriculum](#)
- Appendix 9 - [Display Screen Equipment](#)
- Appendix 10 - [Driving at Work](#)
- Appendix 11 - [Educational Visits](#)
- Appendix 12 - [Electricity](#)
- Appendix 13 - [Emergency Management Plan](#)
- Appendix 14 - [Fire Evacuation and other Emergency Arrangements](#)
- Appendix 15 - [Fire Prevention, Testing of Equipment](#)
- Appendix 16 - [First Aid](#)
- Appendix 17 - [Health and Safety Information and Training](#)
- Appendix 18 - [Health and Safety Monitoring and Inspections](#)
- Appendix 19 - [Infection Control](#)
- Appendix 20 - [Legionella](#)
- Appendix 21 - [Lone Working](#)
- Appendix 22 - [Mobiles/Communication Technology](#)
- Appendix 23 - [Moving and Handling](#)
- Appendix 24 - [New & Expectant Mothers](#)
- Appendix 25 - [Noise](#)
- Appendix 26 - [Office Safety](#)
- Appendix 27 - [Physical Restraint](#)
- Appendix 28 - [Personal Protective Equipment](#)
- Appendix 29 - [Premises Work Equipment](#)
- Appendix 30 - [Risk Assessments](#)
- Appendix 31 - [Security](#)
- Appendix 32 - [Stress](#)
- Appendix 33 - [Sun Protection](#)
- Appendix 34 - [Vehicles](#)
- Appendix 35 - [Violence](#)
- Appendix 36 - [Volunteers in School](#)
- Appendix 37 - [Work at Height](#)
- Appendix 38 - [Work Experience/Young Inexperienced workers](#)

Accident Reporting Procedures

In accordance with the Governors accident/incident reporting procedure employees must report accidents, violent incidents, dangerous occurrences, and near misses on the relevant forms and books.

The Head Teacher will ensure that Health and Safety accidents and incidents are reported and monitored in line with the guidance and procedures.

Minor accidents are recorded in first aid incident books. Original copies go to the parent and a duplicate copy is retained in the book.

Major incidents to pupils and incidents which involve a member of staff, visitor, or contractor will be recorded directly on to the ESafety portal.

School employees are able to input an incident directly into the ESafety Portal.

Wolverhampton City Council policy requires that all accidents to staff and accidents to the public, which includes pupils, visitors, clients etc. where the cause of the accident is related to the way we work, the level of supervision, or the condition of our premises, etc. are recorded on the ESafety Portal or by emailing the completed IR1 form to healthandsafety@wolverhampton.gov.uk. (Please note accidents arising due to a medical condition, are not reportable)

Reporting to the HSE is undertaken by the LA.

In addition, incidents of work-related violence to staff must also be reported. The H&S Team at WCC is only required to record violent incidents to staff by the public or by other members of staff where the incident is in connection with their work. The following are not reportable.

- Staff on staff incidents (non-school related) – these should be dealt with using the Discipline, Grievance and Capabilities Procedures.
- Staff on public incidents – these should be dealt with using the Discipline, Grievance and Capabilities Procedures.
- Public on public (for example pupil on pupil) incidents – these should be recorded locally as they are outside the remit of health and safety and do not need to be reported to the health and safety team.

WCC also has a number of statutory duties in relation to accident/incident reporting and we therefore urge reports to be sent to the H&S Team within 5 days.

Accident Investigation Procedure

All accidents will be investigated, and reasonable measures put in place to prevent a recurrence. The investigation and prevention of accidents is regularly reviewed by the Site Manager, Head Teacher and the Health & Safety Governors.

The extent of the investigation should be proportionate to the risk/outcome of the incident.

EVERYONE IS RESPONSIBLE FOR SAFETY WITHIN SCHOOL.

- School accident reports will be monitored for trends and a report made to the Governors, as necessary.
- The Head Teacher, or their nominee, will investigate accidents and take remedial steps to avoid similar instances recurring. Faulty equipment, systems of work etc. must be reported and attended to as soon as possible.
- The school will still be required to keep a record of all-over three-day injuries – this will be recorded on the school's accident/incident form.
- Copies of reports are maintained in the relevant personal file of the injured.

Training Requirements

Two main levels of awareness and training are required.

Firstly, for all employees who will need to know:-

- Which incidents need reporting
- To whom do they need to report
- How and when to report the incidents
- The legal duties of employees in reporting accidents
- The purpose and benefits of accident reporting

Secondly for Managers and Supervisors who will need to have additional knowledge in:-

- The procedures for notifying the health and safety team.
- The information that must be recorded following an incident.
- Statutory reporting and recording requirements.
- The need and scope of follow up action by managers, the health and safety team and the Health and Safety Executive.

New employees should receive information and instruction in line with the training policy on induction. Existing employees should be trained by short informal sessions within each section by the manager responsible. Management training will consist of a formal/informal briefing on the law, and Council policy and procedures in relation to accident/incident occurrence.

[Back to Appendices](#)

Administration of Medicines

It is recognised that teachers do not have any obligation under their contract to administer medication to pupils and that such administration is on a voluntary basis. There is a requirement however under the DfE to assist pupils with medical needs.

All medication will be administered to pupils in accordance with the DfE document – Supporting pupils with medical conditions in school.

https://www.gov.uk/government/uploads/system/uploads/attachment_data/file/484418/supporting-pupils-at-school-with-medical-conditions.pdf

The school accepts the need for some pupils to receive medication during school hours for conditions such as diabetes or epilepsy. To this extent, the following guidelines apply:

- Medicine will be administered by staff who have been trained in the administration of medications.
- Only medication prescribed by a doctor will be accepted for administration. Non-prescription medication may be administered in exceptional circumstances agreed through consultation with the Head Teacher.
- The medication will only be accepted with written authorisation from the parent or guardian.
- The written authorisation must contain clear instructions about the dosage and time of the administration.
- A standard form will be issued by the school for this permission to be given. The form includes a statement that the member of staff administering the medication does not claim to be any form of medical practitioner.
- Medication will be administered in the presence of another member of staff.
- The medication will be stored in a secure place; and kept cool if it is necessary.
- On school trips, the group leader will accept responsibility for the administration of medication with the qualified first aider on the visit.
- This medication policy will be brought to the attention of all parents in the school prospectus.
- Inhalers are normally outside of this procedure and other arrangements are made such as them being stored in the classroom or central location.

Asthma & Allergens

Some pupils in the school are likely to have an asthmatic condition and / or allergies.

Guidelines for dealing with an asthmatic attack or anaphylaxis are found in the *'Supporting Pupils with Medical Conditions Policy'* and should be made known to all staff. Details of all of the pupils in the school who have an asthmatic or allergic condition are contained in the school medical register which all staff have access to.

All teachers should be aware of the location of each pupil's inhaler and where spare ones are stored.

Children suffering from conditions such as asthma may have to receive medication, usually in the form of an inhaler, during the school day. Written details of the treatment must be provided by the parent, the medication should be administered by the child under supervision of an adult.

Asthma inhalers and auto injection pens for adrenalin are kept in the pupil's classroom with their name clearly displayed.

Please ensure that pupils who suffer from asthma have their inhaler with them throughout any visit.

[Back to Appendices](#)

Asbestos

An asbestos management survey has been carried out by competent contractors to identify where asbestos/ACM's are present within the school.

The significant findings of the survey report have been shared with all staff within the school.

Contractors are not allowed to start any work (especially which involves disrupting the fabric of the building) without producing a method statement and having seen the asbestos survey report.

Regular formal visual checks are carried out (and recorded) of all pillars, ceilings etc. where asbestos/ACM's have been identified.

Any areas of the school that are found to have damage to the fabric of the building (where ACM's are identified), are taken out of use immediately and the area is made secure/inaccessible and sealed off to all persons.

Access to the ceiling voids is not permitted.

Refurbishment & Demolition Surveys.

A Refurbishment Survey will be required when a building (or part of it) is to be upgraded, refurbished or demolished and is required prior to any work commencing. This survey is used to locate and describe, as far as is reasonably practicable.

- All ACMs in the area that the refurbishment will take place
- For the whole building if demolition is planned.

The survey will be fully intrusive and involve destructive inspection, as necessary, to gain access to all areas, including those that may be difficult to reach.

During this type of survey consideration must be given to the risk of spread of debris including asbestos during aggressive inspection techniques such as:

- Lifting carpets and tiles.
- Breaking through walls, ceilings, cladding and partitions.
- Opening up floors and void.

Refurbishment and demolition surveys should only be conducted in unoccupied areas to minimise the risk to pupils, staff and any third parties on the premises. Ideally the building should not be in service, and all furnishings should be removed. This would only apply to working areas within a building for small refurbishment projects.

Release of Asbestos Containing Materials

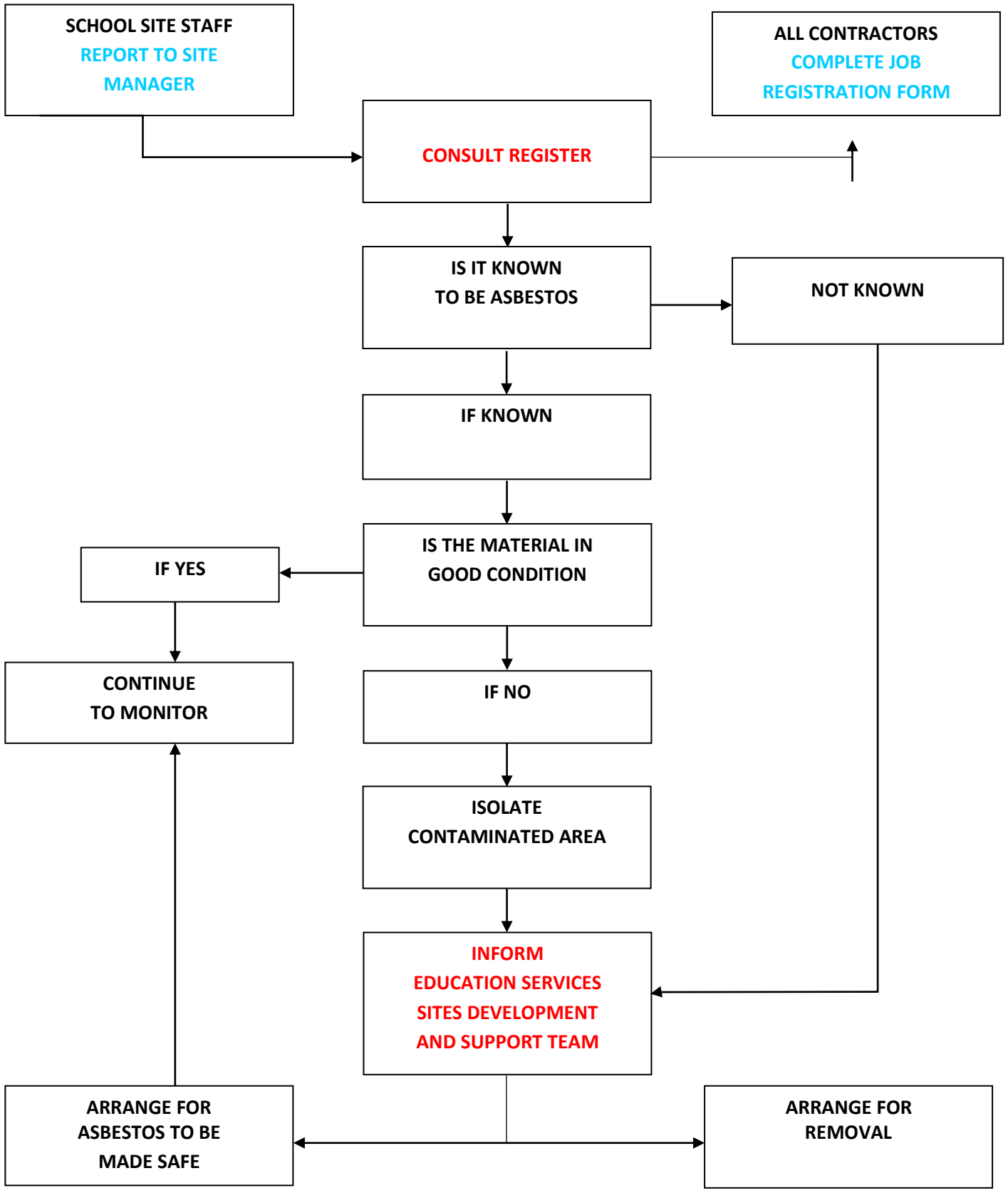
In the event of accidental release of known or suspected asbestos fibres, the area must be evacuated immediately and if possible sealed to prevent unauthorised access. A sign should be displayed to inform persons to stay out of the area.

The Head Teacher must be contacted immediately who will contact the relevant agencies (asbestos registered contractors) to arrange for a sample to be taken and relevant remedial works carried out.

Any contractor who is suspected to be carrying out unauthorised work on the fabric of the building must be reported to the Head Teacher.

Wolverhampton Council are contacted immediately when it is suspected that fibres have been liberated and licensed contractors are used to carry out any remedial works.

[Back to Appendices](#)



Auditing of the Safety System

Once the health and safety systems have been set up and introduced into the school it is a requirement that it is regularly checked to ensure that it remains up to date and effective.

The most common way of doing this is by an audit. Health & Safety Audits are carried out by a Health & Safety Advisor from the LA. The system should be audited regularly and at least once every two years.

The purpose is to ensure the system remains effective. During the audit, the management procedures shown in the safety policy are checked to ensure that they are still put into practice and that the staff are aware of them.

[Back to Appendices](#)

Communication

The Head Teacher will be responsible for disseminating information on health and safety issues. Staff will be made aware of how they can assess information such as outcomes of inspections and risk assessments, and local procedures for health, safety, and fire during inductions and at regular update meetings. Health and safety will also be a regular item on the agenda of team/committee meetings.

The Health and Safety Law poster is displayed in the staff room.

Where appropriate, the shared drive will be used to communicate health and safety information in order to keep the school staff updated on the preventive and protective measures taken by the school.

A copy of the Health & Safety Policy will be uploaded to the shared drive. The Head Teacher will ensure that all new employees know where to find copies of the health and safety policy.

Staff are reminded of this during induction and during termly health and safety updates completed on INSET days or staff training. Staff, receive updates about procedures such as manual handling, working at heights etc. and fire procedures during these meetings.

Temporary/agency/volunteer staff are given information about health and safety prior to commencing work or on the day of commencement. Staff are aware of who the competent person is for health and safety advice and how to raise health and safety concerns (verbally if urgent to the designated member of the leadership group or to the Site Manager).

All staff are consulted on new procedures in staff meetings and reminders are given at the start of each term. Representatives from shared users (catering and cleaning) of the site can raise health and safety issues to the Head Teacher or Site Manager. Staff also have access to health and safety documentation in paper format located in the Head Teacher's office.

Health and safety will also be a regular item on the agenda of Governor Site Management Committee meetings and an annual staff meeting.

The responsibility for Health and Safety is delegated to the relevant committee and will be a standing item on each committee agenda. The Head Teacher will report on school buildings and premises items each term in their report to the Full Governing Body.

[Back to Appendices](#)

Contractors

All contractors used by the school shall ensure compliance with relevant health and safety legislation, guidance and good practice. Contractors are provided with information on any matter that may affect their health and safety while working in the school, including fire arrangements and arrangements for responding to situations of serious and imminent danger such as gas leaks etc.

All contractors are required to report to school office/reception where they will be asked to sign in using the electronic system and wear an identification badge.

The Site Manager and a senior member of staff is responsible for monitoring areas where the contractor's work may directly affect staff and pupils and for keeping records of all contractor work.

Risk assessments are carried out before any routine maintenance is undertaken by external contractors and technical staff are consulted where relevant prior to work, with respect to possible hazards or services. WCC and school will procure contractors and on occasions get their own. Pre-contract meetings are held before work commences on site. Contractors are informed of safety issues prior to work starting.

Method statements and risk assessments are obtained from the contractors in order to assess their ability to undertake work safely before any work commences.

Contractors may need to obtain a 'Permit to Work' before carrying out some work activities around the school e.g., hot work. Permits are issued through Local Authority supported by Local Authority.

[Back to Appendices](#)

Control of Substances Hazardous to Health

Every attempt will be made to avoid, or choose the least harmful of, substances which fall under the “Control of Substances Hazardous to Health Regulations 2002” (as amended).

Risk assessments are carried out and specific safety rules are identified and applied. Any area using substances which fall within COSHH Regulations must take adequate precautions to prevent injury to health, in particular with regard to the safe handling and storage of the substances.

COSHH Assessments for chemicals used around the site are produced in conjunction with Elite Safety in Education following consultation with relevant staff within the school and completion of Hazardous Substance Forms.

Catering and cleaning staff will be responsible for their own COSHH assessments (LA contract).

All data sheets, COSHH information and risk assessments are kept in school by the Site Manager or ChemDoc if the school has access to the system.

Flammable Substances

The school do have some flammables, particularly flammable liquids. Some cleaning items, paints and associated solvents are flammable. Where these items are used, no large quantities are stored.

Deliveries and orders will be kept to a minimum.

Where such items are required in the school, they will be stored in a suitable, locked metal cabinet in Outdoor Container.

Guidelines:

- Teachers should not keep their own small stocks of hazardous substances e.g. cleaning solutions. Staff room cleaning materials should be kept securely in the appropriate staff room cupboard.
- Chemicals and cleaning chemicals should ideally be stored in their own container and clearly labelled with warnings showing clearly on the container.
- Never use food or drink containers to store chemicals.
- Keep only small quantities of the chemicals.
- Any spillages should be cleaned up at once.
- Teach pupils to recognise the red and black warning symbols (orange for older products), which they may come across on household containers, such as bleach, disinfectants, lavatory cleaners, oven cleaners, paint strippers etc., and warn of the dangers.
- Ensure protective clothing is available when using chemicals.
- COSHH assessments must have been carried out before using chemicals and the user informed of the dangers and control measures to be in place for that chemical. There should also be suitable first aid arrangements available for treating chemical splashes.

[Back to Appendices](#)

Curriculum

Health and safety arrangements for Science, PE, Design & Technology and any other curriculum subjects with increased levels of risks are detailed in individual curriculum statements.

Teaching staff are responsible for the maintenance of safe working conditions. They should anticipate potentially dangerous situations and act to prevent them from developing.

Staff should set an example in maintaining safe working and discipline within the classroom. Work needs to be well planned in order to prevent accidents.

[Back to Appendices](#)

Display Screen Equipment (DSE)

All staff who habitually use computers as a significant part of their normal work (significant is taken to be continuous/near continuous spells of an hour at a time) e.g. admin staff, Office Manager and Head Teacher etc. shall carry out a DSE self-assessment.

All workstations, chairs, and associated equipment shall comply with the requirements of the Health and Safety (Display Screen Equipment) Regulations 1992 and current British Standards. School office staff will be responsible for checking this when ordering.

A designated person is responsible for coordinating display screen equipment assessments.

Where the results of an assessment indicate a risk to the user of such equipment, all reasonable steps are undertaken by the school to eliminate these risks or otherwise reduce them to avoid the adverse health effects.

Those staff identified as DSE users shall be entitled to a free eyesight test for DSE use every 2 years by a qualified optician.

Where necessary a contribution is made towards the cost of lenses. Details of this can be obtained from the Head Teacher.

Suitable training and information is given to users of display screen equipment to recognise the hazards associated with non-interrupted use of such equipment and the appropriate precautions to be taken.

Pupil Workstations

Best practice guidelines will be adopted when setting up pupil workstations. Pupils use display screen equipment for short durations.

- Staff are responsible for connecting and disconnecting computers/iPads etc.
- Food and drink should not be consumed by pupils near the computers.
- Pupils are regularly reminded by staff of the importance of not spending too many hours in front of a monitor.
- Any problems with the equipment should be reported to the Head Teacher.

SEN Pupils and Computers:

Some SEN pupils may be provided with individual equipment. Teaching staff should liaise with the SEN department and ascertain the arrangements that have been set up with the pupil for printing etc. Where a pupil has physical disabilities, staff must be aware of any implications for computer work, before that work arises, to avoid any embarrassment for the pupil.

[Back to Appendices](#)

Driving at Work & Minibuses

The school follows the Council's Policy for Driving at Work.

The Head Teacher will ensure that persons who drive their own vehicle as part of school business (this does not include a journey to and from the place of work from home) have the appropriate licence, insurance and MOT and valid Vehicle Excise Duty (where applicable).

The Head Teacher, or designated representative, will require staff to access DVLA and give the school a code to enable them to view their licences. Driver's licences will be checked online annually via the Gov.UK website which will be logged in the school office.

Vehicles on the school site - vehicular access to the school is restricted to school staff and visitors only and not for general use by parents/guardians when bringing children to school or collecting them.

The maximum speed limit entering the school is 5 miles per hour.

The access from the road shall be kept clear for emergency vehicles.

Any staff member not processing the above will not be permitted to drive on school business.

Minibuses:

A Designated Member of Staff is responsible for undertaking

- Daily documented checks on the minibus are
- Weekly documented checks on the minibus
- All defects are reported.

Teaching and other staff who drive minibuses as part of their work must possess a D1* Passenger Carrying Vehicle (PCV) category on their driving licence where it is a requirement in their job description.

Volunteers and other staff members are permitted to drive a minibus under a Section 19 Permit.

*If you obtained a full car driving licence before 1997, you will have a D1 (101) entitlement to drive minibuses. However, should this be the case, before you can drive a minibus you must undergo a competency assessment.

Our school have authorised staff to drive a minibus.

Staff are responsible for undertaking daily checks prior to driving minibus.

All defects must be reported to: The Business Manager.

Where the minibus is fitted with lifting equipment (tail lift) appropriate training will have been received (e.g. MIDAS Accessible) and this must be maintained and inspected in accordance with The Lifting Operations and Lifting Equipment Regulations (LOLER).

[Back to Appendices](#)

Educational Visits/Off Site Visits

Introduction

Educational visits are activities arranged by or on behalf of the school, and which take place outside the school grounds. The Governors and teaching staff believe that off-site activities can supplement and enrich the curriculum of the school by providing experiences which would otherwise be impossible. All off-site activities must serve an educational purpose, enhancing and enriching our children's learning experiences.

In this policy we seek to establish a clear and coherent structure for the planning and evaluation of our off-site visits, and to ensure that any risks are managed and kept to a minimum, for the safety and health of all pupils at all times. Within these limits we seek to make our visits available to all pupils, and wherever possible to make them accessible to those with disabilities. The visits usually take place within the school day.

Aims

The aim of our off-site visits is to:

- Enhance curricular and recreational opportunities for our children.
- Provide a wider range of experiences for our pupils than could be provided on the school site alone.
- Promote the independence of our pupils as learners to enable them to grow and develop in new learning environments.
- Include all years in short excursions and longer residential visits.
- The visits are carefully planned to enable our children to progress in skills and knowledge of the curriculum and of life skills.

Curriculum Links

At St Paul's CE Primary School, we will endeavour to ensure that off-site visits are linked to the Curriculum. For most subjects, there is a corresponding programme of activities. These activities are in line with guidance published by the Local Authority:

- English-theatre visits, visits by authors, poets and theatre groups.
- Science-use of the school grounds, visits to botanical gardens etc.
- Mathematics-use of shape and number trails in the local environment.
- History-castle visits, study of local housing patterns, local museums.
- Geography-use of the locality for field work etc.
- Art and Design-art gallery visits, use of the locality etc.
- PE-a range of sporting fixtures, extracurricular activities, visits by specialist coaches.
- Music-a variety of specialist music teaching, extracurricular activities.
- RE-visits to local centres of worship, visits by clergy.
- PSHE and Citizenship- visit to the fire station or an old people's residential home, visits by local police officers and health workers.

Residential Activities

Pupils in the school will have the opportunity to take part in a residential visit.

At St Paul's CE Primary, children have the opportunity to take part in residential visits. The residential visits enable children to take part in outdoor and adventure activities. These visits are undertaken with the written agreement of the Local Authority. The cost of these visits will be at times be subsidised by the school and pupils are invited to contribute towards the balance.

The amount of the subsidy will be decided on a trip by trip basis. All residential visits, other than Wolverhampton approved sites must have completed the appropriate signed paperwork for the visit.

All visits must be notified to the Director of Learning:

A visits – Approved in school and sent to LA (no response will be sent back)

B visits – Approval by LA – reply will be sent back to the school to confirm approval

C visits – Approval by LA – reply will be sent back to the school to confirm approval

For residential visits, a folder must be set up with the appropriate documentation of children's names, contact numbers, approved signature documentation, medical lists, emergency procedure plan, and venue details.

All visits must be recorded on the EVOLVE system and Cat B and C approved by Wolverhampton Visits Advisor (or other competent person).

All off site visits are put on Evolve and LA and National Guidelines are followed.

How Visits May Be Authorised

The school has an Educational Visits Coordinator (EVC) who has received the appropriate training

The school follows LA guidelines for educational visits and has in place an Educational Visits Policy.

Risk assessments will be completed and documented for all off-site visits using Evolve. Where the visits are regular visits, such as to the park or swimming pool, the risk assessment will be completed then reviewed each term or year as necessary.

The Head Teacher will appoint a group leader to be responsible for running the activity. This will normally be a teacher employed at the school with responsibility for the year group attending the visit.

The school's Educational Visits Coordinator will be involved in the planning and management of off-site visits.

S/he will:

- Ensure that risk assessments are completed.
- Support the Head Teacher and Governing Body in their decisions on approval.
- Organise related staff training.
- Verify that all accompanying adults, including private car drivers, have had satisfactory security checks, and use approved coach companies.
- Make sure that all necessary permissions and medical forms are obtained.
- Keep records of visits and ensure there are regular generic assessments of the risks (for example road-crossing) where there are frequent visits to local venues (for example a swimming facility).

Appropriate child car seats must be used if a private car is being used on a regular basis and not in an emergency situation.

Staff arranging or otherwise involved in off-site activities must familiarise themselves with the regulations, advice and procedures published by the Local Authority.

All off-site activities must take place in accordance with the guidance given.

Where, staff are proposing to arrange an off-site activity, they must seek and obtain the approval of the Head Teacher before any commitment is made on behalf of the school. A comprehensive visit plan should be provided by the member of staff to allow for an informed decision to be made.

It is our policy that all children should be able to participate in educational visits. Where a child with a disability is eligible for a trip, we will make every effort to ensure that s/he is included. We may seek guidance from parents to help us adapt our programme, and we will make any reasonable adjustments to our itinerary to include a child with disabilities. Any such adjustments will be included in the risk assessment.

Risk Assessment

A comprehensive risk assessment is carried out by the group leader before the proposed visit. It will assess the risks which might be encountered on the visit and will indicate measures to prevent or reduce them. The risk assessment should be based on the following considerations:

- What are the hazards?
- Who might be affected by them?
- What safety measures are needed to reduce risks to an acceptable level?
- Can the group leader put the safety measures in place?
- What steps will be taken in an emergency?

Staff planning an off-site activity should make a preliminary visit to the venue, in order to carry out an on-site risk assessment. It is important to take into account the probable weather conditions at the time of year proposed for the trip, and the group leader should take careful account of the facilities available, with due regard to the proposed size of the group. They should also assess the site's suitability with regard to the age and any particular needs of the pupils. They will also consider the venue's own approach to security and to health and safety. Venues providing instructor-led activities will have their own risk assessments for particular sessions, and these assessments may be adopted if it is impractical for the group leader to experience the activity beforehand, or if s/he lacks the skills required to make informed judgements about the risks it may involve. The Head Teacher/Governing Body will not give its approval for the visit unless it is satisfied with the venue, its instructors, and their risk assessment procedures.

It is important to assess and record any health, safety, or security issues that are identified during the preliminary visit. Any such issues will be taken into account when the final decision is taken on whether the visit should proceed, and the visit plan must state both the extent of any risks involved, and the measures that will be taken to reduce or eliminate them. The cost of these preliminary visits will be borne by the school and should be built into the overall financial arrangements for the visit itself.

An activity should normally have sufficient adults taking part to provide the following minimum ratios:

- 1 adult to 6 pupils in Years 1 to 3.
- 1 adult to between 10 and 15 pupils in Years 4 to 6.

Without special safeguards or control measures, these ratios will **not** be adequate to meet the needs of most residential or more complex visits.

The Early Years Foundation Stage (EYFS) Statutory Framework sets out legal minimum ratios for all providers working with children aged up to five. The appropriate ratio during an outing is always likely to be higher than the legal minimum: as with other age groups, this should be determined by risk assessment, which should be reviewed before each outing. It is not unusual for a ratio of 1:1 to be necessary.

In some cases, there may be only one leader on a visit, or on a particular activity during a visit. If this is the case, young people (or any adult helpers) should be competent to manage in the event of the leader being taken ill or injured and should, as a minimum, know what to do to contact the establishment and get support.

A useful framework for assessing requirements for ratios and effective supervision is **SAGED**:

- **S**taffing requirements – Trained? Experienced? Competent? Ratios?
- **A**ctivity characteristics – Specialist? Insurance Issues? Licensable?
- **G**roup characteristics – Prior Experience? Ability? Behaviour? Special and Medical Needs?
- **E**nvironmental conditions – Like Last Time? Impact of Weather? Water Levels?

- **Distance from support mechanisms in place at the home base – Transport? Residential?**

Any trip will require a minimum of two adults. However, these are minimum requirements, and may not provide adequate supervision in all cases.

A risk assessment must also cover transport to and from the venue.

A copy of the completed risk assessment will be given to the Head Teacher, the Governing Body, and the educational visits coordinator, and all adults supervising the trip.

Transport

The costing of off-site activities should include any of the following that apply:

- Transport
- Entrance fees
- Insurance
- Provision of any special resources or equipment
- Costs related to adult helpers
- Any refreshments the school has opted to pay for

Transport arrangements will allow a seat for each member of the party. It is our policy only to use coaches fitted with seat or lap belts, and to insist that they be worn by all those participating in the visit.

Where private cars are used for transport, the group leader is responsible for checking that the insurance (business Insurance) of each driver covers such journeys and double-checking that each driver has been subject to the normal Disclosure and Barring checks.

Legislation on car seats must be taken into consideration when using cars, private hire vehicles etc.

Booster seats purchased prior to February 2017 (without back supports) can still be used and there is no requirement to replace these unless general wear and tear or they have been involved in an accident. <https://www.gov.uk/government/news/new-child-car-seat-rules-no-change-for-existing-booster-seats>

The school makes a charge to parents if their children are transported by means of transport provided by the school. The charge covers the expenses of the journey only; we do not make any profit from this.

Communication with Parents

The parents of children taking part in an off-site activity should be provided with all appropriate information about the intended visit. Parents must give their permission in writing before a child can be involved in any off-site activities.

Funding for off-site activities is provided mainly by parental contributions. This must be made clear to parents in all correspondence about an educational visit at the planning stage.

The timetable for the payment of contributions should allow for the Head Teacher making a decision about the financial viability of the activity in reasonable time.

Further Health and Safety Considerations

All adults accompanying a party must be made aware, by the group leader, of the emergency procedures which will apply. Each adult should be provided with an emergency telephone number. This will normally be the school number, but where an activity extends beyond the normal school day the home telephone number of a designated emergency contact should be provided.

Before a group leaves school, the office should be provided with a list of everyone, children, and adults, travelling with the party, together with a programme and timetable for the activity.

The school has a texting service in operation that keeps parents updated on off site visits.

The safety of the group, and especially the children, is of paramount importance. During the activity, the group leader must take whatever steps are necessary to ensure that safety. This involves taking note of any information provided by medical questionnaire returns and ensuring that children are both safe and well looked after at all times.

Prior to an activity, if it is felt that the behaviour of an individual pupil is likely to compromise the safety of others or the good name of the school, the group leader should discuss with the Head Teacher the possibility of excluding that pupil from the activity.

Visit Plan

The visit plan for intended educational visits must include the following:

- Risk assessment
- Report on preliminary visit
- Applications for approval of visit
- General information
- Names, ages, contact details, permission forms, medical records and other relevant details of all those going on the visit
- Travel schedule
- Accommodation plan (if applicable)
- Full plan of activities
- Fire precautions and evacuation procedures
- Intended arrangements for supervision
- Insurance arrangements for all members of the group
- Emergency contacts and procedures
- General communications information
- Guidance for group leaders
- Guidance for the emergency contact and Head Teacher
- Medical questionnaire returns
- Any medication that may be required
- First-aid boxes

[Back to Appendices](#)

Electricity

Staff must not undertake any work on electrical equipment or installations, including resetting trip fuses, without receiving sufficient training. The Site Manager will ensure that the statutory 5 yearly check of the electrical system is carried out by a competent person, and that a record of this test is kept. Electrical socket outlets must not be overloaded. The use of extension leads will be minimised.

Before using any piece of electrical equipment, staff must undertake a visual inspection to ensure that the plug tops, leads and outer castings are free from defects. Look for signs of burning, damaged cables, loose covers etc. The electrical equipment must be suitable for the environment in which it is to be used. Only portable or low voltage equipment should be used in outside areas.

Repairs to electrical equipment will only be undertaken by trained and competent persons. Any member of staff identifying broken, damaged or faulty electrical equipment should ensure that the equipment is not used and report the matter to their line manager. Records are retained of testing, maintenance and repair to equipment.

The Site Manager is responsible for maintaining an inventory of portable electrical equipment used at school and for keeping this inventory up to date and when new equipment is procured. Portable electrical equipment is inspected and tested by competent persons at regular intervals appropriate to the level of risk but at least every two years.

Be aware of the dangers of trailing cables and do not have trailing cables across walkways. Four-way extension blocks should be secured to the wall or computer trolley or placed off the floor where possible to prevent them being tangled in feet. This prevents tripping hazards and damage to equipment.

The electricity is to be isolated before any work on the electrical system including the changing of light bulbs.

[Back to Appendices](#)

Emergency Management Plan

The definition of what this plan is for; ‘an event – or events – usually sudden, which involve experiencing significant personal distress, to a level which potentially overwhelms normal responses and procedures and which is likely to have emotional and organisational consequences’.

The plan covers:

- A deliberate act of violence
- A school fire or laboratory explosion
- A pupil or teacher being taken hostage
- The destruction or serious vandalising of part of the school
- The death or member of staff through natural causes or accidents
- A transport-related accident involving pupils and/or members of staff
- A more widespread disaster in the community
- Infectious Diseases
- Death or injuries on school journeys or excursions
- Civil disturbances and terrorism

Within the school’s plan there is a flow chart which details whom should be contacted in an emergency. This plan will be reviewed annually by Health and safety Governors.

[Back to Appendices](#)

Fire Emergency Plan & Guidance

The Local Authority is responsible for ensuring the school receives a regular Fire Risk Assessment.

The Fire Risk Assessment is regularly reviewed and communicated to staff and shared users of the school site. The Fire Risk Assessment will be regularly updated to reflect changes within the school.

Fire safety and evacuation procedures are set out in the School's Fire Emergency Evacuation Plan. This plan also details the responsibilities of staff within the school.

In summary:

- Fire drills will be carried out at least once per term. The time taken to evacuate the school will be recorded. If it takes longer than the recognised time investigate and consider carrying out the drill again. The time should normally be less than two minutes.
- Any faults on the systems to be reported to the contractor immediately.
- All checks as defined in the Fire Log Book will be undertaken.

Regular reporting that these measures are in place is a requirement of the LA, whose role is to monitor and assess levels of risk attached to fire safety in its schools. Schools are required to provide a twice termly return to the Local authority to confirm that appropriate measures are in place. The return should consist of the completion of a 'Fire Safety Checks' form and a copy of the Fire Risk Assessment Action Plan and be made using an electronic form accessed via '*Stat Shelf*'

The Head Teacher is responsible for ensuring the fire risk assessment is undertaken and implemented.

The fire risk assessment and the accompanying emergency plan will be reviewed annually and after any significant changes such as changes to the building and room use.

The site is kept as a non-smoking site this also includes the use of all forms of electronic cigarettes.

Where possible external storage of items or waste disposal is kept at a distance from the buildings, intentionally 8m.

Electrical installation is tested on a 5-yearly programme.

Checks and maintenance are carried out on the fire alarms, smoke/heat detectors etc. as identified by statutory requirements. Records are retained in the Fire Logbook.

Measures are implemented for staff and other personnel at increased risk from fire.

A review of training in the use of firefighting equipment and for fire marshals will be conducted on a regular basis.

Personnel with specific responsibilities are given appropriate instruction and training, this includes procedures for the fire alarm panel, and how to interpret the information displayed.

Where there are any staff or pupils who are at increased risk during an emergency situation due to reduced mobility (either permanently or temporarily) a 'Personal Emergency Evacuation Plan' (PEEP) will be developed.

Appropriate instruction and training for staff, pupils, disabled persons, visitors, and contractors is given and reviewed at regular intervals. (An example of this is that an audience is given the information prior to the start of a show). All training is recorded.

Regular fire drills are held, including for out of normal hours occupation. A debrief session is held after each exercise and is recorded.

Any fire event is logged even if it is a false alarm.

Precautions are taken to prevent arson. For example, doors and windows are locked promptly at the end of the school day to prevent access to the site.

Training & Training Provision

At the beginning at each school year, teachers make their class aware of the fire procedures.

Annual fire awareness training takes into account the need for all staff to have sufficient instruction and training for fire evacuation. The staff handbook contains instruction in this area, NQT induction covers this area, and there are fire evacuation procedures posted in each area of the school.

All class teachers are responsible for registering pupils at the fire assembly points.

The posting of evacuation procedures in school areas, the regularity of fire drill practices and pre-contract meetings etc. aim to ensure visitors and contractors have sufficient information on procedures in the event of an emergency evacuation.

Emergency Evacuation Plan

Immediate Actions to Take on Discovering a Fire

At whatever time of occupation, if a fire is discovered, the alarm will be raised and evacuation to a safe place following the signage will take place.

Trained personnel will tackle the fire only where appropriate, using the correctly designated extinguishers, or, in the case of the kitchen area, the fire blanket.

Fire marshals will check the toilets, shut doors, and sweep their areas.

Special Fire Fighting Equipment Provided

- Fire Extinguishers are provided in various sites around the school.
- Extinguishers for use with electrical fires are strategically placed in areas of usage.
- A fire blanket is provided in the kitchen areas and staff room.

Methods of Raising the Alarm

The alarm in the event of fire is indicated throughout the ringing of a continuous fire tone, audible throughout the school building.

Contact Emergency Services

It is the responsibility of the school to contact the emergency services.

The emergency services will be raised by means of telephone. In event of a power failure a mobile telephone will be used.

Processes, Machines or Power that Must be Shut Down

Staff responsible for working with any hot work equipment, such as in the school kitchen, must ensure all equipment is turned off before evacuating the building.

Any class involved in cookery or food technology must ensure that the oven is switched off.

Specific Arrangements for any High-Risk Areas

Boiler Room

The failsafe system will isolate the gas supply. The gas room doors must be kept locked at all times.

Chemical Storage

Within the main school building and must be kept locked at all times in order to isolate the chemical contents.

Arrangements for a Safe Evacuation

Evacuate the building via the nearest safest exit.

Assembly Points

The assembly points are located on the playground. All visitors and contractors must also assemble there. The assembly area is identified through signage attached.

- Pupils should leave in single file when instructed by the teacher in charge of the class. Pupils should leave by the nearest available escape route. The last person to leave the classroom must close the door.
- Pupils should walk in their subject/class groups and remain with their teacher at the assembly point.
- If a pupil is not in a classroom when the alarm sounds, he/she must walk to the assembly point leaving the building by the nearest marked escape route.

A Calm Orderly Exit Is Essential

Walk quickly – DO NOT RUN or stop to collect belongings

- On arrival at the assembly area, pupils must stand in their class groups while staff check pupil numbers.
- A printout of visitors' information etc. will be taken out to the assembly point by the office staff. The result of this check must be reported to the Head Teacher/senior member of staff as soon as it is completed.
- Senior members of staff or the Site Manager/Fire Wardens will be responsible for sweeping their areas of the school whilst, proceeding to the nearest exit point.

All staff should report to the Head Teacher/SLT that corridors/buildings are cleared.

- The Head Teacher/SLT and fire marshals will liaise with each other to ensure all children, staff and visitors are accounted for and safe.
- The Head Teacher or a member of the SLT will liaise with the fire brigade on their arrival.
- The building must not be re-entered until staff, are notified it is safe to do so by the fire brigade/Head Teacher/senior member of staff.
- If the building cannot be reoccupied following an evacuation, the school Emergency plan procedures will be implemented.

All classes should assemble in lines in silence. All staff must remain with their children. All employees should assemble by the children and assist in supporting of the pupils.

In the event of a bomb threat follow the evacuation procedures as above.

GENERAL EVACUATION FOR PEOPLE WITH SPECIAL NEEDS

Mobility Impairment

Those people who require only limited assistance should evacuate the building using the nearest exit. If they have to move at a slower pace, they should allow other persons to exit the building before them and then continue their evacuation to a place of safety. A responsible member of staff will be nominated to escort those who need assistance from the building. Pupils/staff who use a wheelchair and are on the first floor when the alarm sounds will await assistance in the "safe zone". (Unless conditions require immediate evacuation, staff will assist in moving person out of the building.)

Visual Disability

People with a visual disability will usually require the assistance of one person.

Hearing disability

People with a hearing disability should be escorted out of the building by staff.

In the event of staff with a hearing impairment joining then they may require additional means of being warned in the event of an alarm e.g. pager that vibrates when alarm is activated, flashing beacon linked to alarm etc.

Persons at Risk

At times there will be lone workers and contractors within the school. This may occur after the close of the school day or during holidays. The person indicated must ensure s/he is familiar with the evacuation procedure and alerting the emergency services.

The 'Personal Emergency Evacuation Plan' will identify the method of ensuring that persons with any impairment affecting mobility (permanent or temporary) during an emergency are evacuated.

Visitors

This section includes the following: Visitors on site for open evenings, school plays etc.

All visitors will be evacuated safely through using fire training prior and/or during an event. The training will focus on escape routes, assembly points, and evacuation procedures. Visitors will be accounted for by the use of registers/numbers compiled prior to the event.

Methods of control will include: using ushers for school performances, the presence of fire marshals at every performance, registers compiled prior to the performance and a manual head count at the point of entry, a buddy system for people with impairments, effected by seating arrangements etc.

Overall Control

The Head Teacher is in overall control of the emergency situation during the course of the school day and at any point when s/he is on the school premises. The responsibilities of the Head Teacher are to ensure the smooth evacuation of all adults and pupils from the building, the accountability of all persons, liaison with the emergency services as appropriate, and the determination of each step of the situation. The Head Teacher will record the emergency situation and the actions to be taken. In the absence of the Head Teacher the Deputy Head will assume this role or the person designated 'in charge' by the Head Teacher.

Fire Marshals

It is their responsibility to ensure the safe evacuation of all persons and to sweep the building as they leave.

Fire Fighting

Fire marshals are trained to use the firefighting equipment. It is their primary responsibility to evacuate pupils in event that a fire cannot be isolated and extinguished. Where this is possible the appropriate appliance should be employed, and the matter reported immediately to the nearest fire marshal who will then take appropriate action.

Details of service isolation points (i.e. Gas, Water, Electricity)

Electricity:

Gas:

Water:

Fire Control Panel

The Site Manager will check the fire panel and inform the Head Teacher who will then liaise with the emergency services. In the absence of the Site Manager this role will be undertaken by a designated person.

Responsibilities for Persons at Special Risk

The relevant teaching assistant is responsible for ensuring that adults and children at special risk are conducted to a place of safety or refuge until they can be evacuated in safety? Have they had any specific training e.g., using the 'evacuation chair'?

Emergency Services Liaison Procedures

The Head Teacher or a member of the SMT will liaise with the emergency services on arrival. They will have a clear idea of the number of pupils evacuated, taken from calling registers, the number of visitors evacuated, and the number of staff accounted for, taken from the electronic print out.

Additionally, the Head Teacher will have some idea about the location of the fire. The Head Teacher or nominee will meet the appropriate services at the school car park entrance and direct them to the emergency.

Specific Information for the Emergency Services

The emergency services will be told the location of the fire if known. Missing persons will be identified by name and last known location and the flammable material stores will be identified by location on the school map.

Location of Information

The information needed will be held near the fire panel.

Re-Entering the Building

People will be prevented from re-entering the building due to all fire doors closing behind each class evacuated. Control and discipline within pupil lines will ensure that they stay close to their teachers.

People will know when they can re-enter the building through instruction from the Head Teacher, or in absence, the Deputy/Assistant Head Teacher. If the emergency services have been called, then the Senior Officer is responsible for giving permission for re-entry to the building.

Procedures to Follow If the Building Cannot Be Re-Entered

Arrangements in place to use another school building until parents can be contacted and collect pupils.

Staff to monitor/escort the pupils during this time, are each class teacher and teaching assistant. It is their responsibility to ensure that all pupils arrive at the relocation point.

Parents or guardians will be contacted by telephone if the pupils are to be sent home.

Pupils who cannot be safely sent home early will remain in the charge of a member of staff until such time as a parent can be contacted.

[Back to Appendices](#)

Fire Prevention Inspection/Maintenance of Emergency Equipment

Testing of the Fire Alarm System

Fire alarm call points will be tested weekly in rotation by the Site Manager and a record kept in the fire logbook.

Green Door Release Boxes

These will be tested regularly by the Site Manager.

Emergency Red Pull Cords

These will be tested regularly by the Site Manager.

Emergency Lighting

These systems will be checked for operation monthly in house by the Site Manager and annually by an approved competent contractor.

Test records are located in the site's record book.

Any defects on the system will be reported immediately to the alarm contractor/electrical engineer.

A fire alarm maintenance contract is in place and the system will be tested by a competent contractor.

Inspection of Fire Fighting Equipment

An approved competent contractor undertakes an annual maintenance service of all firefighting equipment. Weekly checks are carried out to ensure that all firefighting equipment is available for use and operational and for any evidence of tampering.

Defective equipment or extinguishers that need recharging should be taken out of service and reported direct to the approved contractor.

Means of Escape

Daily checks for any obstructions on exit routes are carried out and all final exit doors are operational and available for use.

[Back to Appendices](#)

First Aid

St Paul's CE Primary School has risk assessed its requirements for first aid and ensures that there is adequate provision to meet those requirements.

The EYFS Framework requires a list of staff first aiders to be displayed or staff Paediatric certificates displayed and made available to parents.

A list of first aiders is displayed in designated areas of the site.

A nominated first aider will ensure that there is a sufficiently stocked first aid box. They will reorder and replenish as necessary. The nominated person also ensures that all first aid stocks are within date.

During morning break and lunchtimes there are designated first aiders available.

All accidents are reported in the relevant accident books or forms. The accident books are located in the first aid room.

Injuries to children are notified to parents at the end of the day, and head injuries require immediate parental contact and attention where necessary and an Accident/Incident/Illness Report slip will be given to the parents.

Transport to Hospital:

If the first aider or Head Teacher considers it necessary, the injured person will be sent directly to hospital (normally by ambulance). Parents and/or guardians will also be informed. No casualty should be allowed to travel to hospital unaccompanied and an accompanying adult will be designated in situations where the parents cannot be contacted.

Blood, avoiding contamination

All staff should be familiar with this procedure before having to handle blood.

- Wash hands first.
- Put on non-permeable disposable gloves.
- Clean any wound as necessary and dress any wound if necessary.
- Dispose of the gloves and wipe or contaminated material in a plastic bag, seal if possible, and dispose of in the main bin.
- Wash hands thoroughly again.
- Record incident in the accident book.

Health Care Plans

Health care plans are in place for those pupils with complex medical needs e.g. chronic or on-going medical conditions (e.g. diabetes, epilepsy, anaphylaxis etc.)

These plans are reviewed annually, and written precautions/procedures made available to staff.

Staff under-go specific training related to health conditions of pupils and administration of medicines (e.g. diabetes, epilepsy, anaphylaxis etc.) by a health professional as appropriate.

Button Batteries

Please be aware small batteries are dangerous if swallowed and must be kept and stored out of reach of young children.

When opening a pack which includes multiple button batteries, make sure that children cannot access the batteries which remain in the open packs.

Do not dispose of a battery in the classroom waste bin.

What to do if a child ingests a button battery:

- CALL 999 In the event of battery ingestion, seek immediate medical attention.

- Do not let the child eat or drink until an X-ray can determine if a battery is present.
- Take the battery packaging or the device containing the battery to the hospital so as the doctor can identify the battery type and chemistry.

[Back to Appendices](#)

Health & Safety Information & Training

Health and safety induction training will be provided and documented for all new employees by the Head Teacher or their nominee.

The Head Teacher is responsible for ensuring all staff, are provided with adequate information, instruction and training and identifying the health and safety training needs of staff.

All employees will be provided with appropriate training to enable them to carry out their responsibilities and work in a safe and efficient manner and in particular:

- Induction training in the requirements of this policy.
- Update training in response to any significant change.
- Training in specific skills needed for certain activities, (e.g. use of hazardous substances, work at height etc.)
- Refresher training where required

The Headteacher will:

- Ensure that details of health and safety training are retained and will arrange refresher training as necessary.
- Assess the effectiveness of training received.
- Ensure those H&S training courses that have been identified as mandatory by the LA have been undertaken by the relevant staff members.
- Complete a training matrix as necessary and reports on training to the Governors monitoring committee at least annually.

Staff are required to sign to say that they have read the policy and that they agree to follow the procedures.

Training records are held in personal folders, and in a lockable cupboard and the Head Teacher will be responsible for co-ordinating health and safety training needs and for including details in the training and development plan. This includes a system for ensuring that refresher training (for example in first aid) is undertaken within the prescribed time limits. The Head Teacher will be responsible for assessing the effectiveness of training received.

The Head Teacher will complete the training matrix as necessary and report on training to the Governors monitoring committee at least annually.

Each member of staff is also responsible for drawing the Head Teacher's attention to their own personal needs for training and for not undertaking duties unless they are confident that they have the necessary competence.

Details of all health and safety training will be recorded in the training folder/database by the Head Teacher.

Agency/Students

A nominated member of staff will be responsible for ensuring all temporary workers receive the relevant health and safety information through the issue of the Induction Sheet at the commencement of the work period.

Young Workers

A young person is defined as anyone who is under 18 years of age. The school will ensure that young persons are protected from risks to their health and safety as a consequence of their lack of experience, absence of awareness of existing or potential risk or the fact that they have not yet fully matured. This will include young people who are participating in work experience. Risk Assessments for all work activities will be carried out for young/inexperienced persons before they start work.

Health & Safety Monitoring and Inspection

A general inspection of the site will be conducted termly and be undertaken/co-ordinated by the Head Teacher and Elite Safety in Education.

This monitoring will also cover management systems in addition to inspecting the premises.

Termly Inspections will be conducted jointly with the Site Manager, Governor if possible.

The Site Manager will inspect the school daily for such interim hazards and record any findings.

[Back to Appendices](#)

Infection Control

Introduction

This policy has been written following guidance from UK Security Agency guidance on infection control and winter readiness.

Aim and Objectives

This policy aims to provide the school community with guidance when preparing for, and in the event of an outbreak of an infection such as pandemic influenza or any contagious illness.

Principles

The school recognises that infections such as influenza pandemics are not new. No-one knows exactly when the school will be faced with having to deal with a potentially contagious illness amongst its community.

We recognise the need to be prepared. Infections are likely to spread particularly rapidly in schools and as children may have no residual immunity, they could be amongst the groups worst affected. We recognise that closing the school may be necessary in exceptional circumstances in order to control an infection. However, we will strive to remain open unless advised otherwise. Good pastoral care includes promoting healthy living and good hand hygiene. School staff will give pupils positive messages about health and well-being through lessons and through conversations with pupils.

Planning and Preparing

In the event of the school becoming aware that a pupil or member of staff has an infectious illness we would direct their parents to report to their GP and inform Local Public Health England. During an outbreak of an infectious illness such as pandemic influenza the school will seek to operate as normally as possible but will plan for higher levels of staff absence.

The decision on whether school should remain open or close will be based on medical evidence.

This will be discussed with the UK Security Agency and the Government.

It is likely that school will remain open, but we recognise the fact that both the illness itself and the caring responsibilities of staff will impact staff absence levels.

The school will close if we cannot provide adequate supervision for the children.

Infection Control

Infections are usually spread from person to person by close contact, for example, infected people can pass a virus to others through large droplets when coughing and sneezing.

Through direct contact with an infected person: for example, if you shake or hold their hand and then touch your own mouth, eyes, nose without first washing your hands. Or even talking at a close distance.

Viruses can also survive longer on hard and soft surfaces.

Staff and children are given the following advice about how to reduce the risk of passing on infections to others:

- Wash hands regularly, particularly after coughing, sneezing or blowing your nose.
- Minimise contact between your hands and mouth/nose.
- Cover your nose and mouth when coughing and sneezing or in crook of elbow.
- Do not attend school if you have an infectious illness.

These messages are promoted through posters around the school, in assemblies and through Personal and Social Education lessons.

HAND WASHING IS THE SINGLE MOST IMPORTANT PART OF INFECTION CONTROL IN SCHOOLS

Minimise Sources of Contamination

- We will ensure staff have received training or competent in food handling.
- We store food that requires refrigeration, covered and dated within a refrigerator at a temperature of 5°C or below.
- We wash hands before and handling foods.
- Food is brought from reputable sources and used by recommended date.

To Control the Spread of Infection

- We ensure good handwashing procedures (toilet, handling animals, soil, food).
- Children encouraged to wipe and blow their own noses and dispose of soiled tissues in waste bins.
- We wear protective clothing when dealing with accidents and incidents.

Personal Protective Equipment (PPE)

Disposable non-powdered vinyl or latex-free CE-marked gloves, face coverings (if advised) and disposable plastic aprons are worn where there is a risk of splashing or contamination with blood/body fluids (for example, nappy or pad changing) by all staff.

Cleaning of The Environment

Cleaning throughout the school is frequent and thorough including the cleaning of all toys and equipment in class. Cleaning of the environment, cleaning equipment such as buckets are colour coded and cleaned and replaced as needed. Cleaning contracts are monitored regularly and ensure cleaners have access to PPE.

Cleaning of Blood and Body Fluid Spillages

All spillages of blood, faeces, saliva, vomit, nasal and eye discharges are cleaned up immediately (with staff wearing PPE). When spillages occur, they are cleaned using a product that combines both a detergent and a disinfectant to be effective against bacteria and viruses and suitable for the surfaces used on. Mops are never used for cleaning up blood and body fluid spillages – disposable paper towels are used, and waste is disposed in secure bins along with nappies.

Vulnerable Children

Some medical conditions make children vulnerable to infections that would rarely be serious in most children, these include those being treated for leukaemia or other cancers, on high doses of steroids and with conditions that seriously reduce immunity.

The school will have been made aware of such children.

These children are particularly vulnerable to chickenpox, measles or parvovirus B19 and, if exposed to either of these, the school will contact the parent/carer and inform them promptly and further medical advice sought. It may be advisable for these children to have additional immunisations, for example pneumococcal and influenza.

Female Staff – Pregnancy

If a pregnant woman develops a rash or is in direct contact with someone with a potentially infectious rash, this should be investigated according to PHE guidelines by a doctor. The greatest risk to pregnant women from such infections comes from their own child/children, rather than the workplace. Some specific risks are:

Chicken Pox can affect the pregnancy if a woman has not already had the infection.

Report exposure to midwife and GP at any stage of exposure.

The GP and antenatal carer will arrange a blood test to check for immunity. Shingles is caused by the same virus as chickenpox, so anyone who has not had chickenpox is potentially vulnerable to the infection if they have close contact with a case of shingles.

German Measles (rubella). If a pregnant woman comes into contact with German Measles, she should inform her GP and antenatal carer immediately to ensure investigation. The infection may affect the developing baby if the woman is not immune and is exposed in early pregnancy. Measles during pregnancy can result in early delivery or even loss of the baby. If a pregnant woman is exposed, she should immediately inform whoever is giving antenatal care to ensure investigation.

Slapped Cheek Disease (parvovirus B19) can occasionally affect an unborn child. If exposed early in pregnancy (before 20 weeks), inform whoever is giving antenatal care as this must be investigated promptly.

This advice also applies to pregnant students.

In school we follow the guidelines set by the Health Protection Agency, regarding the recommended period of time that pupils should be absent from school.

Detailed information about many conditions is available at: <http://www.hpa.org.uk/>.

It is important to note that the school are unable to authorise absence on medical grounds or illness for conditions where the guidelines state that no period of absence is recommended, e.g., head lice.

Meningitis

Meningitis most commonly affects babies, young children and teenagers, but can also be harmful to older people and adults with lower immunity. It can be very serious, even fatal, if it is not treated quickly, as it infects the protective membranes surrounding the brain and spinal cord. It can cause blood poisoning and permanent brain and nerve damage.

Symptoms may include a high temperature, vomiting, headaches, a rash that does not fade when rubbed over with a glass, stiff neck, an aversion to bright lights, drowsiness and fits. These symptoms may occur in any sequence and sometimes not all of them will be experienced at all.

Bacterial and virus meningitis are contagious and can be spread through sneezing, coughing, kissing, sharing cutlery and utensils, and spending considerable time with an infected person, so schools are one of the prime locations where the infection can spread. It can be caught from people who carry the virus or bacteria but are not ill themselves.

Vaccinations are available for several types of meningitis but practicing good personal hygiene (washing hands and coughing/sneezing into tissues etc.) and not sharing drinks and cutlery will also help reduce the risk of contagion.

Coronavirus Disease – COVID-19

Coronavirus disease (COVID-19) is an infectious disease caused by a newly discovered coronavirus.

Most people infected with the COVID-19 virus will experience mild to moderate respiratory illness and recover without requiring special treatment. Older people and those with underlying medical problems like cardiovascular disease, diabetes, chronic respiratory disease, and cancer are more likely to develop serious illness.

The best way to prevent and slow down transmission is to be well informed about the COVID-19 virus, the disease it causes and how it spreads.

Protect yourself and others from infection by washing your hands or using an alcohol-based rub frequently and not touching your face.

The COVID-19 virus spreads primarily through droplets of saliva or discharge from the nose when an infected person coughs or sneezes, so it is important that you also practice respiratory etiquette (for example, by coughing into a flexed elbow). [Back to Appendices](#)

Legionella

The school complies with advice on the potential risks from legionella as identified in guidance from the HSE.

St Paul's CE Primary School employs the services of external contractors to provide the school with water hygiene assessments.

- The Contractor will be responsible for ensuring monthly monitoring of temperatures are carried out and recorded.
- Thermo-static mixing valves are tested and inspected on an annual basis by the contractor.
- The Site Manager will also be responsible for flushing of little used outlets and recording the findings.
- The Site Manager receives all legionella work sheets and any actions forwarded to the Head Teacher by the appropriate channels.

[Back to Appendices](#)

Lone Working

Lone working can be defined as a wide variety of situations including:

- Travelling alone - on foot, by car or public transport.
- Peripatetic (mobile) working - visiting people in their homes, visiting business premises, attending meetings or even work on the highway.
- Use of interview rooms - effectively, working alone.
- Arriving at or leaving premises - the first person in/last out is in effect working alone.
- Out of hour's activities - cleaning, maintenance, etc.

Lone working is undesirable, but in some circumstances, it cannot reasonably be avoided.

Suitable risk assessments of working practices will be carried out to determine the level of risk for each member of staff lone working.

Definition of Lone Working

Where staff are engaged in work (either outdoors or indoors) where there are no other people who could reasonably be expected to come to their immediate aid in the event of an incident or emergency.

It is the responsibility of the Head Teacher to ensure members of staff are aware of the risks of lone working.

Hazards identified will be evaluated by the Head Teacher for the likelihood of the hazard causing harm. Measures will be introduced if the assessment shows that existing precautions are inadequate to eliminate or adequately control the hazard. The risk assessment will be subject to review to ensure it is relevant and current to the workings of the school.

Controls

Staff should seek the permission of the Head Teacher to work alone in the building outside of normal school hours.

The experience and training of all staff and the activities to be undertaken will be taken into consideration before allowing lone working. Lone workers must be considered capable of responding correctly in an emergency situation.

Whenever possible it is recommended that staff work with a colleague.

A staff member must seek permission to work alone and contact the Head Teacher by e.g. text message, the staff member must receive a response before lone working. If a reply is not received from the Head Teacher, the member of staff must ideally contact another member of staff or a family member as the default position.

Good practice would be to liaise with other staff during school holidays, but in the absence of doing so, the member of staff should ensure a family member is aware s/he will be working alone on the school premises. At weekends and during school holidays, it is the staff member's personal responsibility to ensure someone is aware. If exceptions to this are identified, then the policy will be reviewed. The staff attendance log in must be maintained.

Staff should not enter the school premises if there are signs of intruders but are advised to immediately call the police.

Staff should lock the outer doors when lone working and ensure that areas of the school not in use are kept secure. Staff must not place themselves in danger by challenging intruders or vandals but should call the police for assistance.

Staff should not work alone if they have medical conditions that might cause incapacity or unconsciousness.

All lone working staff should establish their own checking in and out system with family, friends, or work colleagues. It is advised that lone workers provide a relative or friend with a telephone contact number (Head Teacher's or SLT's mobile phone numbers) to call if the lone worker fails to return home at the expected time.

It is not normally practicable for the Head Teacher to periodically visit and visually monitor people working alone.

Staff will receive information and/or training to help ensure they understand the risks associated with lone working and to minimise these risks. All lone workers, in an otherwise unoccupied building, should follow the school's Fire and Emergency Procedures. Staff have a responsibility for making themselves familiar with and following the school's safety procedures and location of safety equipment.

Contractors should have access to their own first aid kit suitable for treating minor injuries.

If staff rely on mobile phones, they must ensure that their network has good reception within school. Although phones can give extra reassurance, they do not provide complete protection and staff should still be alert for their own personal safety at all times.

In the situation where two or more people are working in isolated areas of an otherwise unoccupied building, personnel should keep each other informed about their movements.

Lone workers should not undertake activities that involve the handling of money, working at height, any task that has been identified as medium or high risk, or which are potentially hazardous given their own level of experience and the nature of the task.

All school personnel are reminded about the importance of maintaining a healthy work/life balance.

It is the responsibility of all school personnel and contractors to adhere to the lone working procedures and to report any difficulties, failure of equipment or general concerns on health and safety to the Head Teacher. If members of staff fail to follow procedures designed to protect their safety, this could result in a disciplinary matter as they will have contributed to their injury and any compensation claims for damages or unfair dismissal may be reduced accordingly.

The school respects the right of the employee, under the Health and Safety at Work etc. Act 1974, to refuse to carry out work where there is a serious and imminent risk of danger. They also can advise others to do the same without being dismissed as a result. Staff should be proactive in bringing to the attention of Head Teacher any aspect of work-related risks.

The Head Teacher will regularly monitor the implementation of these procedures. Following any incident, an investigation will be carried out and its findings used to inform change to procedures and working practices.

Staff are encouraged not to work alone in school. Work carried out unaccompanied or without immediate access to assistance should be risk assessed to determine if the activity is necessary. Work involving potentially significant risks (for example work at height) **should not** be undertaken whilst working alone.

Where lone working cannot be avoided staff should:

- Obtain a senior member of staff's permission and notify him/her on each occasion when lone working will occur.
- Where, staff are working alone in offices the door must be secured to ensure there is no access by unauthorised persons.

- Ensure they do not put themselves or others at risk.
- Ensure they have means to summon help in an emergency e.g., access to a telephone or mobile telephone etc.
- An outside security contractor will be used if the alarm is activated in “night hours”.
- The Site Manager will ask for assistance to attend if the alarm is activated in daylight hours.
- All visits to pupil’s homes will be carried out in pairs.
- Report any incidents or situations where they may have felt “uncomfortable” or immediately telephone the emergency services 999.

[Back to Appendices](#)

Mobiles/Communication Technology

Aim

Is to inform all members of our school community about the appropriate use of mobile phones at our school, and to outline the procedures and processes of this policy.

Staff

Mobile phone use is not permitted during teaching time, while on playground duty and during meetings, mobile phones will be switched off and stored in personal lockers. Staff can only access their phones in the staff room when children are not present.

Except in urgent or exceptional situations. These situations must be agreed in advance by the Head Teacher or Deputy Head Teacher.

Should staff need to take photographs whilst on the school site, they should seek the Head Teacher's approval in advance and must utilise the school's own photographic equipment. Under no circumstances can iPads be used to take photographs of the pupils or other staff without the consent of the Head Teacher. The iPads/iPods must not be used for communication of social networking sites.

Disciplinary measures can and will be taken, should staff be deemed to have used social networking sites inappropriately. Contravening the Data Protection Act, bringing the school into disrepute, disclosing information about the school and/or its' personnel constitute inappropriate use.

Pupils

The Head Teacher and Governors of St Paul's CE Primary School recognise that many pupils and their families own a mobile phone. We also recognise that some parents/ guardians may request that their children bring a mobile phone to school for before and after school safety/security reasons.

Our core business of teaching and learning needs to be conducted in an environment free from unnecessary distractions or disruptions. Therefore, the school will not allow the bringing of mobile phones to school by pupils, unless under exceptional circumstances which must be agreed prior with the Head Teacher or Deputy Head Teacher.

In general, pupils should not bring valuable items to school, as they can be easily lost or stolen, which is often distressing for a primary age child.

Pupils remain responsible for all their personal effects whilst at school. When pupils enter the school grounds the school takes no responsibility for mobile phones. Pupils should not bring mobile phones into school unless by prior arrangement. As such, mobile phones are brought to school entirely at the owner's risk. The school accepts no responsibility for replacing lost, stolen or damaged mobile phones.

There are no reasons why a pupil needs to have in their possession, or use, a mobile phone during the school day. Should a pupil require a mobile phone, it is to be handed into the school office at the beginning of the school day and collected at the end of school by the owner or their parents.

Parents are reminded that in cases of emergency the school office remains a vital and appropriate point of contact and can ensure their child is reached quickly and assisted in any appropriate way.

Sanctions

For those pupils who fail to follow the above guidelines, the following sanctions may be applied:

- Confiscation of the mobile phone (handed back to the parent at the end of the day).
- Communication, with parents/guardians, regarding mobile phone use at school.

Inappropriate Use

Generally, a mobile phone will be deemed to be used inappropriately if it:

- Disrupts or is likely to disrupt the learning environment or interfere with the operation of the school.
- Threatens or is likely to threaten the safety or wellbeing of any person; or is in breach of any law.
- Distracts from the performance of duties.

Inappropriate use of mobile phones will include pupils using them to bully, intimidate or otherwise harass other people through any SMS or text message, photographic, video or other data transfer system available on the phone.

It should be noted that it is a criminal offence to use a mobile phone to menace, harass or offend another person. The school may consider it appropriate to involve the police.

Related Technology

The procedures applying to the inappropriate use and security of mobile phones, apply equally to the inappropriate use of portable computer games, iPods and similar devices.

Exemptions

Exemptions of this policy can only be approved by the Head Teacher and then only in exceptional circumstances.

[Back to Appendices](#)

Moving & Handling

Manual handling is considered by St Paul's CE Primary School to be all operations requiring lifting carrying, pushing, pulling.

Generic risk assessments for regular manual handling operations are undertaken and staff provided with information on safe moving and handling techniques.

Staff should ensure they are not lifting heavy items unless they have received training and/or equipment in order to do so safely.

All manual handling activities which present a significant risk to the health and safety of staff will be reported to the Head Teacher and where such activities cannot be avoided, a risk assessment will be conducted to ensure such risks are adequately controlled. A copy of this assessment will be retained in the risk assessment file to be accessed by all.

Moving and Handling

All staff who move and handle pupils have received appropriate training (both in general moving and handling people techniques and specific training on any lifting equipment, hoists, slings etc. they are required to use.)

All moving, and handling of pupils has been risk assessed and recorded by a competent member of staff.

Equipment for moving and handling people is subject to inspection on a 6-monthly basis by a competent contractor.

[Back to Appendices](#)

New & Expectant Mothers

This area applies to those members of staff, who are pregnant, have given birth in the previous six months or who are, breast feeding.

St Paul's CE Primary School concurs that it is a moral, as well as legal duty, to ensure the health and wellbeing of employees in these circumstances and special consideration is taken when considering the risks to this group of workers.

St Paul's CE Primary School is aware that expectant mothers may have health and safety concerns which need to be addressed individually and risk assessments will be completed once the Head Teacher is aware that an employee is an expectant mother.

A person specific risk assessment will be conducted throughout the pregnancy with the member of staff concerned and any reasonable action necessary will be mutually agreed and the assessment retained on the personnel file for future reference.

Some risks (some chemicals, physical risks and some biological risks) may have more significance very early on in the pregnancy. The risk of damage to the foetus and of miscarriage may be greater and it is therefore important that expectant mothers in some occupations (school lab technicians, for example) give the school as much notice as possible so that adjustment can be made.

The risk assessment will be regularly reviewed throughout the term of the pregnancy and upon return to work. There are facilities within the school for pregnant staff members or those who have given birth within the previous six months to rest, or to accommodate nursing mothers who are breast feeding.

[Back to Appendices](#)

Noise

St Paul's CE Primary School will take all reasonable measures to protect the hearing of individual employees who are required to work in designated noise areas or who are exposed to significant levels of noise.

A risk assessment will be undertaken if required to determine any circumstances where employees may be exposed to excessive levels of noise. Employees exposed to such noise will be advised of the risk.

There are no areas of the school building at present which are deemed to have excessive noise levels and no requirement for anyone entering the school building to wear ear protection.

Clear management of person and pupil movement and communication, in line with the school's behaviour policy, is expected at all times, in order to ensure that the noise from persons using the building is not excessive or a danger to health and wellbeing.

The school will take all reasonable measures to ensure that where existing noise levels can be reduced at source, such as by the fitting of noise absorption devices, this will be considered.

When new plant equipment is purchased, St Paul's CE Primary School will, ensure that the specification of the equipment is developed to maintain noise levels during manual operation at the lowest possible level.

[Back to Appendices](#)

Office Safety

Offices should be checked to ensure trailing cables from computers do not cause tripping hazards.

A Display Screen Assessment is carried out to ensure that staff are not exposed to risks from repetitive strain injury or work-related upper limb disorder.

There should be adequate storage provided for files etc and the offices should be maintained in a tidy state. Space under the desks and open floor areas are not to be used for storage.

Deliveries should be stored appropriately so as not to present a trip hazard. A high standard of housekeeping is expected to reduce the risk of accidents.

Furniture and equipment shall be kept tidy and not allowed to pile up so as to cause a toppling hazard. Unwanted items are to be cleared out and not allowed to accumulate in such ways as to congest the working areas.

[Back to Appendices](#)

Physical Restraint

The school has a separate policy relating to 'Physical Restraint.

Risk Assessments will be undertaken should the need arise relating to physical intervention.

Training must be undertaken prior to using any intervention strategies.

Intervention training is recorded, and refresher training carried out in accordance with the training provider's recommendations.

All incidents where a physical intervention has been used are recorded. Other information e.g. factors which may have triggered the event, must be used to review any risk assessments and management plans.

[Back to Appendices](#)

Personal Protective Equipment

Protective clothing and equipment will only be provided when an assessed risk cannot be eliminated or controlled by some better means, or where it is required by law.

PPE will be provided by the school free of charge following a risk assessment.

Where protective clothing or equipment is provided, employees must make full and proper use of it at all times, and as instructed or following manufacturer's guidelines.

Employees must keep protective clothing and equipment clean, so far as is reasonably practicable, carry out user checks as required, and make it available for maintenance. Any damaged PPE should be reported to the headteacher.

[Back to Appendices](#)

Premises & Work Equipment

Statutory Inspections

Regular inspection and testing of school equipment is conducted by appropriate contractors according to timescales specified by regulations/guidance available. Records of such monitoring will be kept in the cupboard outside the main office.

All staff are required to report any problems found with plant/equipment to the Site Manager using the deficiency slips located in various locations throughout the school. Defective equipment will be clearly marked and taken out of service by storing in a secure location pending repair/disposal.

Curriculum Areas

Curriculum coordinators are responsible for reporting maintenance requirements for equipment in their areas to the Head Teacher.

Gas Safety

All gas appliances will be inspected and tested on an annual basis by a 'Gas Safe' registered contractor.

Electrical Safety

Staff will not undertake any work on electrical equipment or installations, including resetting tripped fuses, without receiving sufficient training.

PAT testing is undertaken on a two-yearly basis.

The contractor is responsible for maintaining the PAT inventory and a copy will be given to school.

The Site Manager will ensure that the statutory five-year check of the electrical installation is carried out by a competent person. A record of this test will be kept, and the necessary action plan drawn up in response.

Electrical sockets will not be overloaded in this school and, where it is necessary to use an extension lead, these will be of the fused and switched type to prevent overloading.

Before using any piece of electrical equipment staff will conduct a visual inspection to ensure that the plug tops, leads, and outer casings are free from defects. Where defects are detected, the equipment will be immediately labelled and isolated. The equipment will be securely locked away and not used again until the defect has been rectified or disposed of.

Repairs to any electrical equipment belonging to the school will only be undertaken by a trained and competent person. Records are kept of any repair to electrical equipment required.

The electrical equipment will be suitable for the environment in which it is being used and portable appliance testing will be conducted as necessary, depending on the type of equipment.

Welfare

The workplace is clean and tidy; lighting in the workplace is reasonable and suitable toilets and washing facilities are available. Drinking water is available and there is an adequate supply of both hot and cold running water. Suitable facilities are available for rest and for pregnant women.

Floors and traffic routes are kept clean, dry and are non-slippery.

Windows can be opened, and lower-level windows can be safely cleaned.

Pedestrians and vehicles are separated at the main entrance with pathway leading to the main reception.

Doors and gates are suitably constructed and incorporate appropriate safety devices.

PPE

Protective clothing and equipment will only be provided when an assessed risk cannot be eliminated or controlled by some better means, or where it is required by law.

PPE will be provided by the school free of charge following a risk assessment.

Where protective clothing or equipment is provided, employees must make full and proper use of it at all times, and as instructed or following manufacturer's guidelines.

Employees must keep protective clothing and equipment clean, so far as is reasonably practicable, carry out user checks as required, and make it available for maintenance. Any damaged PPE should be reported to the Site Manager.

Play Equipment

All play equipment will only be used when supervised. Equipment will be checked daily or before use for any apparent defects.

The P.E. equipment will be inspected on an annual basis by an approved contractor.

A visual inspection of fixed outdoor play equipment will be carried out by the Site Manager; a termly inspection will be carried out by an Operational Inspector of Play and an annual inspection by an Annual Inspector of Play (RPII).

Smoking

The site is kept as a non-smoking site. This also includes the use of all forms of electronic cigarettes.

[Back to Appendices](#)

Risk Assessments

The school risk assessments (for all activities, teaching and non-teaching and premises) will be co-ordinated by Elite Safety in Education and the school staff.

The risk assessments are held centrally on the Learning Platform, and a hard copy kept in the main office.

Risk assessments will be reviewed on an annual basis or when the work activity changes, incidents occur, whichever is the sooner. Staff are made aware of any changes to risk assessments relating to their work.

How a Risk Assessment Will Be Undertaken

The Governing Body consider risk assessment to be a careful examination of the hazards in the school and an assessment of whether the particular hazard is likely to harm anyone and what precautions need to be taken.

The definitions of 'hazard' and 'risk' adopted by the Health and Safety Executive are helpful in understanding what is involved:

Hazard means anything that has the potential to cause harm (e.g. chemicals, electricity, working from ladders etc.).

Risk is the likelihood, great or small, that someone will be harmed by the hazard.

The Health and Safety Executive has proposed a "five step approach" to risk assessment. The following sections outline how this five-step approach governs risk assessment in St Paul's CE Primary School:

Look for Hazards

Hazards come in many forms. They are "anything that can cause harm" and can include substances, processes, the layout or structure or condition of premises, machines etc. In St Paul's CE Primary School this can include pupils, parents and visitors to the school.

The important matter is that a wide-ranging examination is undertaken. A risk assessment which looked only at work procedures and processes might miss a hazard associated with, for example, a slippery surface on a staircase. It is better for a person undertaking a risk assessment to think creatively and look for all factors which might create a hazard, in order to include the widest range of possible hazards, than to leave something out.

Risks will be looked for throughout the course of a normal day, as the business of the school is conducted.

Decide Who Might be Harmed and How

In St Paul's CE Primary School, consideration will be given to the number of staff who might be harmed by a particular hazard and also to the number of pupils and visitors who might be harmed.

Risks will be evaluated, in the formal recording process as high, medium or low.

Evaluate the risks and decide whether existing precautions are adequate or whether more should be done

"Risk" reflects a combination of the likelihood that a particular hazard will cause harm or injury and the likely severity of that harm or injury. The risk assessment process will assess the level of risk in the particular circumstances and identify the measures to be taken.

The method of assessing levels of risk used at St Paul's CE Primary School involves looking at the residual risk remaining once control measures have been implemented.

The first priority is to seek to remove the risk altogether by removing the hazard or

discontinuing the hazardous process.

Where this is not practicable or possible, the Governing Body will, as a second priority, seek to reduce the risk by modifying the work processes involved and thereby making the activity less hazardous, reducing the number of people exposed, reducing the length of exposure etc.

The third priority, only acceptable where none of the first two are feasible, is to institute appropriate protective measures such as providing protective equipment or isolating or drawing attention to the hazard.

Record the Findings

This is a legal requirement at St Paul's CE Primary School because there are 5 or more employees but is considered as a matter of course due to the presence of pupils.

The risk assessments are recorded on a proforma and are accessible to all employees.

Employees are required to sign to say they will check risk assessments if they are unsure of the control measures.

Review the Assessment from Time to Time

The requirement to review the risk assessment applies particularly when significant changes have taken place in schools which may have introduced new hazards.

At St Paul's CE Primary School risk assessments are reviewed on an annual basis or earlier if an incident has occurred.

Training

As noted previously, risk assessments must be undertaken by competent persons. Risk assessments undertaken by untrained or inadequately trained people are likely to be worthless and fail to discharge the Governing Body's responsibility for risk assessment. They may even lead to additional hazards, whereas proper risk assessments may identify hazards previously hidden or unknown.

The Head Teacher, teachers and non-teaching staff at St Paul's CE Primary School will therefore have access to quality training and guidance from the LA or an independent provider on the principles of risk assessment and on how to assess risks in a systematic way.

Risk Assessment Forms

A risk assessment form, together with advice and examples of how to complete them, has been adopted by the Governing Body and is invaluable in organising and presenting a risk assessment.

Monitoring

Staff may need reassurance that the way in which they have undertaken risk assessments is adequate. This is achieved through the Head Teacher.

Safety representatives will be entitled to receive copies of risk assessments. They will be provided with copies of risk assessment forms and will be expected to always examine them carefully.

Individual Risk Assessments

Specific risk assessments relating to individuals, e.g. staff member or young person/pupil are held on that person's file and will be undertaken by the relevant staff.

This covers new or expectant mothers who are employees who are pregnant or who have given birth within the previous six months or who are breast feeding. Pregnancy places extra strain on new or expectant mothers and closer attention needs to be given to their health and safety at work. It is both a moral duty and a legislative requirement under the Managements of Health and Safety at Work Regulations 1999 Regulation 16 relating to risk assessment for new and expectant mothers, that employers take

particular account of the risks to expectant mothers at work.

It is the responsibility of staff to inform the Head Teacher of any medical condition (including pregnancy) which may impact upon their work. Such risk assessments will be reviewed on a regular basis.

Curriculum Activities

Risk assessments for curriculum activities will be carried out by a relevant staff member using the relevant codes of practice and model risk assessments developed by national bodies.

[Back to Appendices](#)

Security

Safety of our pupils, staff, and visitors to the school is of paramount concern to our whole school community. Governors have endeavoured to make the school as safe as possible.

Entry to School for Visitors/Staff

The reception area is clearly marked and directs visitors to the front entrance of the school. Visitors are asked to wait in the airlock system.

Visitors who are admitted into the school are asked to sign in using the electronic system and given a visitor's lanyard. Staff are informed of planned visitors, through a weekly briefing and a daily board.

All visitors are responsible for their own health & safety and the safety of "others" who are under their control whilst on school premises.

Some internal and external doors are controlled by electronic fob systems.

Staff are given a fob for certain areas this will be returned if the staff member leaves and will be deactivated.

Pupil Supervision

The Head Teacher or in their absence a nominated member of staff remains on the premises until the last child is collected.

Security of the school building is reviewed by the Governors meetings.

Missing Pupils

If a pupil goes missing and cannot be located, the Head Teacher or other senior staff should be informed immediately. The signing-out system and the office staff should be consulted and if necessary, a search of the school and local environments should be made urgently. If it appears that the child may have left the school site or have been abducted, parents and police should be informed immediately.

On educational visits it is the responsibility of the group leader and other staff to maintain a check on pupil numbers and to be aware of the location of pupils at all times. If a pupil goes missing, staff at the venue should be informed immediately, the school and LA contacted.

Alarm System

The school alarm is always set each day and the Site manager attends the site and carries out a visual check on the outside, if anything is suspicious then the police are called if necessary and the Head Teacher.

Intruders

In the event of a potential intruder, common sense and a due regard for personal safety and the safety of others should be exercised.

All legitimate visitors should be identifiable from intruders by their visitors' badge.

Parents should not enter the building without reporting to the office.

If appropriate a potential intruder may be challenged, i.e. "Can I help you? Are you looking for reception?"

If the intruder appears threatening or dangerous the Head Teacher or another senior member of staff should be sought. If necessary, evacuation procedures may be called upon if this situation is likely to make the situation safer. Police should be called as soon as possible. The safety of pupils is paramount, and they should be moved from the presence of the intruder immediately.

Care of ICT Equipment

All laptops and iPads are secured in trolleys.

Security of Data

The Governors recognise their responsibility to ensure that measures are taken to ensure no breach of security.

“Appropriate technical and organisational measures shall be taken against unauthorised or unlawful processing of personal data and against loss or destruction of, or damage to, personal data.”

Personal Property

Staff are responsible for the security of their own personal items. These can be deposited in the office or staff room during the day. Staff are provided with lockers and are encouraged to store valuables securely in these.

Pupils are discouraged from bringing valuables into school. Pupils can ask the secretary to look after small quantities of money they may bring in to school. Parents are constantly reminded to identify pupils' clothing by securing nametags to them.

Curriculum Networked Computers:

- Accessed by personal passwords
- Password gives pupils and staff different access levels
- Office Manager and Head Teacher only has access to management files
- Files are backed up daily

Office Computers:

- Accessed only via individual passwords for head and school office
- Financial files are accessed via further password
- Access to the school office is prohibited except for staff requiring access for a specific purpose

Other Data Protection Issues:

- Printed material is disposed of by shredding
- Parents are informed of data kept in school and its use through the Fair Processing Notice
- Personal data is not disclosed over the telephone
- School anti-virus software is updated regularly
- The school uses the service of an external contractor to look after the IT services

Internet Safety

The internet is regularly used in school as it has numerous educational benefits. In order to minimise the risk of children accessing unsuitable material, the school provides constant supervision and uses only selected links and child-friendly search engines, and these are filtered through software to help monitor what is being accessed. Parents and carers are asked to sign authorisation for their child to use the internet.

Parental permission is sought when children are admitted into school, authorising photographs of their children or their work to be incorporated on the school's website or in newsletters or other publications.

E-Safety rules have been shared with pupils.

Safety of Children

It is the responsibility of each teacher to ensure that all curriculum activities are safe. Similarly, curriculum coordinators will always be vigilant for hazards concerning equipment or activities related to their area of responsibility. If a teacher or curriculum coordinator has any concerns about pupil safety, s/he should bring them to the attention of the Head Teacher before that particular activity next takes place.

We do not take any child off the school site without the prior permission of the parent.

In loco parentis forms, the duty of care which all teachers must operate when they have children in their care. This applies to all activities within the school curriculum, to extra-curricular activities during or outside normal school hours and whether undertaken on or away from the school premises.

[Back to Appendices](#)

Stress/Wellbeing

The school takes very seriously the need to safeguard the health and welfare of all our staff. This includes their professional development. The school also pays particular attention to the assessment and prevention of work-related stress, thus complying with health and safety law. If a member of staff is experiencing stress at work, he/she should inform the Head Teacher without delay. After any absence, staff report to the Head Teacher to complete a return-to-work form. Staff are encouraged to report any work-related issues which are impacting on health.

Specific arrangements are in place to address wellbeing and work-related stress. Stress and wellbeing have been addressed in compliance with the HSE Management Standards. Information about work related stress has been provided to employees. Factors which may suggest that there is a problem with stress related illness, e.g. high rates of absenteeism and poor performance are monitored by the Head Teacher.

The school is committed to promoting high levels of health and wellbeing and recognise the importance of identifying and reducing workplace stressors through risk assessment, in line with the HSE management standards.

Systems are in place within the school for responding to individual concerns and monitoring staff workloads.

[Back to Appendices](#)

Sun Protection

Skin cancer is one of the most common cancers in the UK and the number of cases is rising at an alarming rate. The good news is that the majority of these cases could be prevented. Most skin cancers are caused by UV radiation from the sun. If we protect ourselves from the sun, then we can reduce our risk. This is particularly important for children and young people whose skin is more delicate and easily damaged.

Sunburn in childhood, can double the risk of skin cancer.

St Paul's CE Primary School have used the guidance promoted through Cancer Research and particularly the Sun-Smart Campaign in order to draw up this policy.

What is the Sun-Smart Campaign?

Sun-Smart is the national skin cancer prevention campaign run by Cancer Research UK. The Sun-Smart schools initiative encourages nurseries and pre-schools to develop and adopt sun protection policies. They are part of a broader campaign communicating effective skin cancer prevention messages to the general public.

The five key Sun-Smart skin cancer prevention messages are:

- Spend time in the shade between 11 and 3
- Make sure you never burn
- Aim to cover up with a t-shirt, hat and sunglasses
- Remember children burn more easily
- Use factor 15+ sunscreen

At St Paul's CE Primary School, we want staff and pupils to enjoy the sun safely. We shall work with staff, pupils and parents to achieve this through:

Education:

- We will talk about how to be sun smart in assemblies at the start of the summer term.
- Parents and guardians will be sent a letter explaining what the school is doing about sun protection and how they can help at the beginning of the summer term.

Timetabling:

- Where reasonably practicable children will play outside out of direct sunlight.

Shade:

- The trees provide summer shade.
- Canopies

Clothing:

- Pupils are asked to bring in appropriate clothing i.e. sun hats.

Sunscreen:

- Children encouraged to have sun-cream applied by parents before school.
- Children allowed to, bring sun-cream in but where possible apply it themselves. Staff will assist where required.
- Sunscreen use will be encouraged on school trips.

[Back to Appendices](#)

Vehicles

Vehicular access to the school is restricted to school staff and visitors only and not for general use by parents/guardians when bringing children to school or collecting them.

The maximum speed limit entering the school is 5 miles per hour.

The school has a designated disabled parking bay.

Deliveries

Where possible deliveries should be made before children start the school day.

[Back to Appendices](#)

Violence

St Paul's CE Primary School will not tolerate violent behaviour from parents, visitors or others who enter the school.

The school has a responsibility to protect, so far as is reasonably practicable, the safety of all employees who work for the school.

Prevention:

To reduce the risk of violence staff should consider the following guidance:

- Consider the working environment e.g. exits, space available.
- Do not meet parents when colleagues are not in the near vicinity.
- There may be individuals who have a reputation for aggression. This information should be shared confidentially within the school.
- Always have another member of staff present.
- If there is a confrontation try to calm the situation, staff should be aware of their stance and tone of voice etc.

Where a situation is identified, the parent is encouraged to return for a preplanned appointment.

[Back to Appendices](#)

Volunteers in School

Introduction

At St Paul's CE Primary School, we define a volunteer as: any adult who agrees to undertake, without pay, designated tasks which support the work of the school. This can include working alongside teaching and teaching support staff in the classroom or working in a support capacity within another area of school to. A volunteer should not be viewed as a substitute for a paid member of staff, but an additional supplement to school's resources.

St Paul's CE Primary School values volunteers and the contribution that they make to the sustained success of the school. We hope that the association will be a mutually beneficial partnership between the school and the volunteer; that the benefits to be gained by the school in terms of community participation will be mirrored by the development gained by the volunteer from their experiences in school.

Safeguarding

St Paul's CE Primary School is committed to safeguarding and promoting the welfare of children and young people and expects all staff and volunteers to share this commitment.

All adults who volunteer for working at St Paul's CE Primary School will require an Enhanced Disclosure & Barring Check prior to starting their placement in school.

It is the responsibility of the school to ensure that its child protection policy is adhered to at all times.

Organisation

- Volunteers will not be asked to undertake certain duties:
- Those which would normally fall within a teacher's responsibility under *loco parentis*.
- Covering for staff absence within the classroom.
- Unsupervised 1:1 work with children.
- Those which would normally be undertaken by a contractor engaged by school or the Local Authority (LA).
- Those requiring full financial or budgetary responsibilities.
- Any administrative tasks involving highly confidential or sensitive information.

Volunteers will be allocated a supervising member of the school's staff, although they may be working with other staff on a day-to-day basis. The line manager will be responsible for induction of the volunteer and will be the point of contact for any queries or problems.

The deployment of volunteers should not involve any substantial addition to the workload of staff; however, it is hoped that every effort will be made to ensure that the volunteer is adequately inducted and is given every assistance to perform, the duties required of them.

Volunteers will be given a schedule of the tasks and scope of the role that is expected of them, these to be agreed with the supervising person in view of any skills, experience, and training and development needs of the volunteer and organisational needs.

A volunteer would sign in as a visitor. It should be noted that volunteers' work in school is, of necessity, of a voluntary nature and may be terminated at any time by the volunteer or the school.

School Information and Regulations

Volunteers will be provided with a handbook detailing relevant information. Any queries for information not covered in this should be addressed initially to the supervising person. Particular attention is drawn to health and safety issues. The same legislation

and responsibilities on health and safety applies to volunteers as paid staff within the school.

The school holds Employers' Liability and Public Liability Insurance and this insurance covers volunteers in school.

Expenses

Although there is no obligation to make financial re-imbursments to volunteers, the school will, under normal circumstances reimburse 'out-of-pocket' expenses (e.g. excess travel costs connected with the tasks undertaken for school etc.). Travel expenses will be reimbursed at the current agreed rate; any other expenses (e.g., resources or equipment purchased for school use) will be reimbursed at the cost paid. All financial claims made should be agreed with the Head Teacher prior to expenditure.

Induction and Training

Volunteers who work in school will be given an induction process which aims to enable them to become familiar with the school, staff and their roles, how their role fits into this, principles and procedures unique to the school and an outline of our expectations of the volunteer's role and tasks involved. A Health and Safety Induction and safeguarding training will take place on the first day in school, if not before.

If the volunteer is undertaking formal training (e.g. NVQ or other work-based qualification), the school will endeavour to support this by allowing opportunities and practical advice for them. If training is a requirement of the expected role within school, such opportunities should be provided for the volunteer.

Complaints and Grievances

It is acknowledged that problems and conflicts could arise when the person is a volunteer as much as for a paid member of staff. Initial issues should be raised with the supervising person and it is to be hoped that the issues may be resolved through these channels. In the event that this is not possible, the Head Teacher will investigate the matter with a view to resolution. Failure to resolve at this level will necessitate Governing Body involvement.

[Back to Appendices](#)

Work at Height

Working at height can present a significant risk. Where such activities cannot be avoided a risk assessment will be conducted to ensure such risks are adequately controlled. A copy of this assessment will be provided to employees authorised to work at height.

When working at height (including accessing storage or putting up displays) appropriate stepladders or kick stools are to be used. Staff must not climb onto chairs etc.

The school's nominated person responsible for work at height is the Site Manager.

The nominated person shall ensure:

- All work at height is properly planned and organised.
- The use of access equipment is restricted to authorised users.
- All those involved in work at height are trained and competent to do so.
- The risks from working at height are assessed and appropriate equipment selected.
- A register of access equipment is maintained, and all equipment is regularly inspected.
- Any risks from fragile surfaces are properly controlled.

There is an inspection record for the access equipment used at St Paul's CE Primary and this is maintained each term.

Teaching staff and teaching assistants will put up displays using the correct procedures i.e. use of kick-stools.

A simple hierarchy is communicated to staff:

- Avoid working at height where possible.
- Use equipment or other measures to avoid falls when working at height cannot be avoided.
- Eliminate falling distance by using equipment to minimise working length.
- Contractors will not be permitted to use any of the school's work equipment.

[Back to Appendices](#)

Work Experience, Young and Inexperienced Workers

A 'young person' is defined as anyone who is under 18 years old.

The school will ensure that young persons are protected from risks to their health and safety as a consequence of their lack of experience, absence of awareness of existing or potential risk or the fact that they have not yet fully matured. Risk assessments for work activities will be carried out for every young/ inexperienced person before they start work.

Young people are likely to need more supervision than adults. Good supervision will help us as a school get a clear idea of the young person's capabilities and progress in the job and monitor the effectiveness of their training. Induction and training will be tailored to the tasks the person will be undertaking.

Work Experience:

Our school does have students on work experience and understand we have the secondary responsibility for the health and safety of the student and should be managing any significant risks. Risk assessments, induction, and training will be provided, and a member of staff assigned to the work placement student as a Mentor.

Temporary Workers:

All agency or temporary staff will be inducted by the Head Teacher. A brief induction will be given covering fire procedures, first aid, and accident reporting and welfare arrangements. In addition to this, risk assessment that relate to the staff members area of work will be covered.

[Back to Appendices](#)